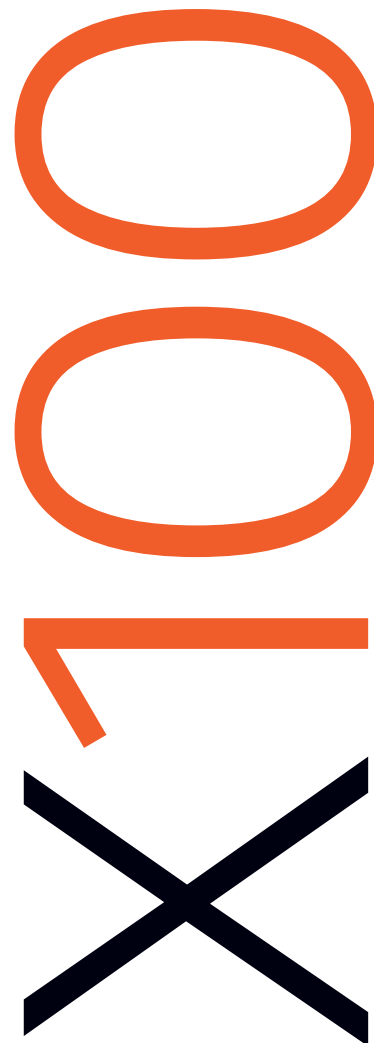


X100

VHF | DSC | AIS



The em-trak X100 isn't just a marine radio —  
it's the heart of a safer, calmer, more connected boating experience.

em-trak 

Made for those who love the water but demand reliability, the X100 brings together VHF, DSC, and AIS technology with intuitive wireless control. Whether with family, a full crew, or anchored in quiet, it makes life onboard easier, safer, and more enjoyable.



## Overview

### ENGINEERED WITHOUT COMPROMISE

- Rugged, water and weather-proof design
- Clear-Wave™ digital audio for crystal-clear communication
- Sunlight-readable full-colour display
- Wi-Fi and Bluetooth connectivity
- NMEA2000 and 0183 integration
- Built-in GPS (optional external antenna)
- Zero-loss VHF antenna splitter, one antenna for AIS and VHF
- Intuitive controls and flexible mounting options

## ■ X100 Base



X100  
VHF | DSC | AIS





## LIFE ON THE WATER, MADE EFFORTLESS

### ■ Stay Connected Anywhere

**Onboard:** The CONNECT-X app turns your smartphone or smartwatch into a wireless command mic. Make and receive calls, monitor VHF/DSC, AIS traffic, and navigation alerts from anywhere on your vessel.

- **Private Crew Intercom:** Create a secure, boat-wide intercom system for seamless crew communication without broadcasting over VHF.

- **Safety Alerts on Mobile:** Receive instant MOB (Man Overboard) and AIS-PLB alerts directly on your mobile devices, complete with recovery instructions.

- **Scalable Coverage:** Integrates with your vessel's Wi-Fi to eliminate dead spots and ensure full onboard connectivity.



# CONNECT-X app

## Freedom to Command Anywhere Onboard

The em-trak CONNECT-X app turns your phone or watch into a wireless mic for full X100 control anywhere on your vessel.



YOUR DEVICES BECOME  
PART OF THE BOAT'S  
COMMUNICATION SYSTEM:

- **Manage VHF, DSC, AIS & MOB alerts** from anywhere onboard
- **Make and receive VHF/DSC calls** away from the helm
- **Monitor AIS targets** and navigation warnings remotely
- **Receive MOB and AIS-PLB alerts instantly**, with recovery guidance
- **Use private onboard intercom** between CONNECT-X devices
- **Broadcast to the whole vessel** when required
- Stay fully informed, even when relaxing.

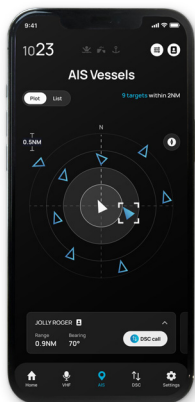


## ■ Features That Elevate Your Boating Experience

The ocean doesn't compromise and neither does the em-trak X100. From the moment you power it on, you'll feel the difference: a marine communication system that's been engineered not just to survive the elements, but to thrive in them.



- Certified Class D VHF/DSC radio with Clear-Wave™ digital audio
- High-powered AIS Class B (5W) transceiver with silent mode
- Private onboard intercom between CONNECT-X devices
- MOB and AIS-PLB detection with instant alerts and recovery guidance
- Unified phonebook for DSC, AIS, and intercom calls
- Seamless AIS data streaming to navigation apps
- One-touch DSC calling for fast, reliable communication.



- **VHF/DSC:** Dependable Class D communication
- **AIS:** Track, be seen, and receive CPA alerts
- **MOB:** Instant detection and guidance

## ■ Advanced Safety and Communication You Can Rely On



- **Wireless Command-Mic:** Control from anywhere onboard
- **Private Intercom:** Crew connection without chaos
- **One-Touch Calling:** Call AIS targets instantly
- When something matters — a close pass, a call for help, a MOB alert — the X100 acts immediately.



# Unique X100 Features for Total Control



## X100

- Dual, tri, or custom tri-channel monitoring.
- Quick-access channels and simple fist-mic controls.
- Two-way crew intercom and public address system.
- Loudhailer for direct vessel-to-vessel communication.
- Full compliance with international channel mappings.

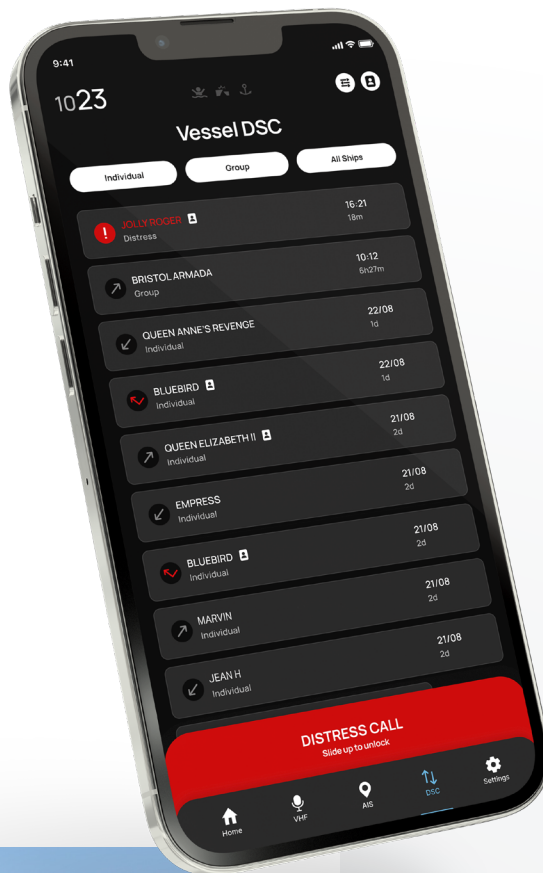


# DSC

## DSC MADE EFFORTLESS

- **NMEA2000 integration** for DSC messaging
- One-touch **AIS target calling**

- Safety, urgency, and distress calls at your fingertips.
- Group calling for races and events.
- Test calls to ensure reliability before you set sail.
- Broadcast vessel-wide when you need to.
- Stay fully informed even when relaxing.
- It's freedom, without losing control.

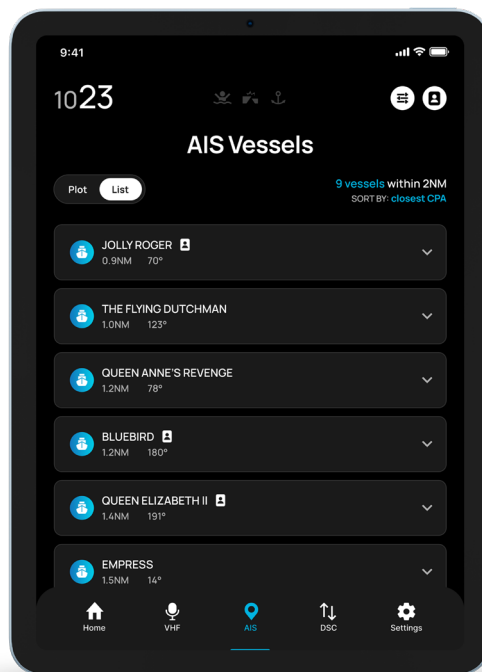




# AIS

## SAFETY WITHOUT COMPROMISE

- **5W Class B AIS**  
for exceptional range
- **Intelligent scheduling**  
to avoid interference
- **Silent mode** with auto timer



# MOB

- **Automatic MOB**  
device enrolment
- **Full Wi-Fi coverage**  
for alerts wherever you are

# Why Boaters Choose the X100

Because it fits the way people really use their boats:

- **Reliability:** Built for long days, rough weather, and real-world challenges
- **Convenience:** Wireless control, private communication, smart connectivity
- **Safety:** MOB alerts, AIS visibility, DSC calling — always within reach
- **Performance:** Clear-Wave™ audio, high-power AIS, intelligent scheduling
- The X100 brings together everything that matters offshore — connection, clarity, confidence — in one powerful, beautifully integrated system.

The X100 brings together everything that matters offshore — connection, clarity, confidence — in one powerful, beautifully integrated system.



# ■ Specifications you can trust



## Physical specification – base unit

Dimensions	W249mm, H84mm, D162mm
Weight	700–800g

## General

RF Frequency range TX	156.025–161.425 MHz
RX	156.300–161.925 MHz
DSC	156.525 MHz
AIS 1,2	161.975, 162.025 MHz
Usable channels	INT, USA, CAN, ATIS

## Electrical

Power supply	9.6–31.2 V DC
Operating temperature range	-25°C to +68°C
Antenna impedance	50 $\Omega$
Transmitter output power	VHF: 25W, 1W AIS: 5W

## Audio

Audio output power – internal speaker	5W producing 81 dB @ 1m
External speaker/ loudhailer	15W

## Connectivity

NMEA 0183 / NMEA 2000	Ed 3.101
Wireless LAN standards	IEEE802.11 b/g/n
Authentication and encryption	WEP (64/128 bit), WPA-PSK (TKIP), WPA2-PSK (AES)
Bluetooth	4.2 classic and low energy (BLE)

## Certifications

AIS class B SOTDMA	IEC 62287-2:2017
DSC / VHF	EN 301025 v2.2.1 & IEC 62238
NMEA	IEC 61162-1 & IEC 61162-3
Environmental	IEC 60945 "Exposed" + IEC 60529 IP66





# Get yours now

[em-trak.com](http://em-trak.com)



**em-trak United Kingdom**

em-trak Marine Electronics Limited  
Wireless House  
Westfield Industrial Estate  
Midsomer Norton  
Bath, BA3 4BS  
UK

**T** +44 (0)1761 409 559

**F** +44 (0)1761 410 093

**E** [enquiries@em-trak.com](mailto:enquiries@em-trak.com)

**em-trak Scandinavia**

Scanmarine DK Aps  
Egensevej 25  
2770 Kastrup  
Denmark

**T** +4581949820

**E** [info@scanmarine.dk](mailto:info@scanmarine.dk)

<https://scanmarine.dk/em-trak>

Dealer stamp:

