

MARINE FIRE DETECTION

Product Brochure





Fra vores base i Kastrup er vi opsatte på at levere hurtigt til marineindustrien!
Vi har adresserbare, konventionelle og brandslukningscentraler på lager sammen med de tilhørende detektorer og alarmsignal enheder.
Dette giver vores kunder mulighed for at ekspedere opgaver hurtigere og holde fartøjerne operationelle; hvilket sparer afgørende nedetid.
Med et omfattende udvalg af fuldt godkendte brand detekterings systemer leveret fra lager i DK & UK, gør Scanmarine DK til din foretrukne leverandør af marine brand detektering?

Det omfattende program fås gennem et solidt forhandlernetværk: Erhvervs forhandlere

<https://scanmarine.dk/forhandlere/erhverv>



**Marine and
offshore**



**Audio visual
signalling**



**Fire
detection**



**Hazardous
area**

Marine and offshore



About us

ScanMarine DK is a company with a focus on safety. Together with our strong partners, we ensure fast and competent advice, delivery and service. ScanMarine DK's solutions are used on board all types of vessels and maritime installations in offshore oil, gas, defense and commercial maritime industries and yachts all over the world, where safety, compliance with legislation and working environment conditions are the biggest drivers for improving the safety and duty of care of employees and assets.

Marine Range

Scanmarine DK has been providing marine fire detection and audio visual signalling equipment for over **10 years**. Our extensive range provides fire detection systems solutions, fire extinguishing systems and marine approved alarm signaling devices. Our products carry marine approvals that include MED, LR, ABS, DNV, KR, UK-MER, CCS and BV, ensuring the safety of your **marine investment**.

What we do

From our base in **Kastrup, Denmark**, we are committed to supplying the marine industry and supplying the industry! We keep addressable, conventional and extinguishing fire control panels in stock alongside the associated detectors and alarm signaling devices. Allowing our clients to turn around jobs quicker and keeping the vessels operational; **saving crucial downtime**.



Marine and offshore

Addressable Fire Panels

FireFinder *Marine*

FireFinder Marine

Multi-Loop Addressable Fire Control Panel

FireFinder Marine is an Intelligent Analogue Addressable Fire Alarm Control Panel that is available in 1 to 4 loop panel options.

The FireFinder Marine is suitable for small to medium sized vessels

and is compatible with Apollo Discovery Marine Detectors.

Powerful and flexible programming is achieved via AMPAC's configuration tool, ConfigManager Plus, which includes many pre-engineered

programming functions. Simple system programming is easily achieved via the front panel.

FireFinder Plus is configurable as a peer-to-peer network up to 99 panels/nodes with a maximum of 250 Loops.



- Fully expandable
- 1-4 loops
- Large graphic display
- 4 programmable monitored inputs
- 4 programmable monitored sounder outputs
- 5 programmable relays
- 2 auxiliary power outputs
- Networkable
- High level graphics interface
- Modbus interface
- Programmable muster alarm
- Fully EN54-2 and EN54-4 approved



Marine and offshore

Addressable Fire Panels

FireFinder *Marine*

FireFinder Marine

Network Repeater

Connected to the FireFinder Marine high integrity network, the Repeater is designed to remotely display the fire alarm control system status allowing the interrogation of all system alarms, faults and disablements.

Abilities include: "Evacuate", "Reset", "Disable / Enable of Zones and/or Devices", "Override programmed Delays" and "Silence and re-sound of alarms" during an emergency condition.



- LCD display with event log
- Optional flush mount enclosure
- Multiple repeaters on single system possible

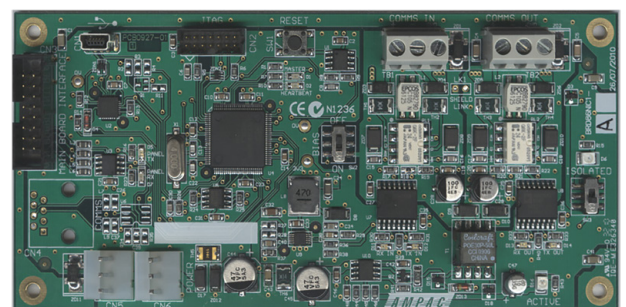
FireFinder Marine

Marine Network Interface Board

The Network Interface Board allows up to 99 FireFinder Marine panels to be networked together.

The network is capable of withstanding an open or short circuit fault without the loss of communications to any panels.

The network operates as a peer-to-peer network, with all device state changes shared over the network.



- Enables multiple panels and repeaters to be networked
- Fault tolerant network connection
- Easy installation with 2-wire connections



Marine and offshore

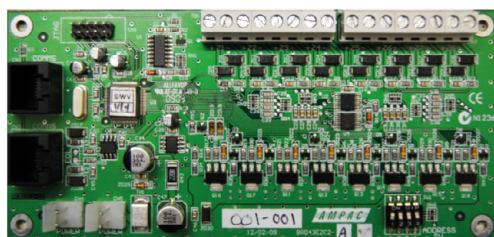
Addressable Fire Panels

FireFinder *Marine*

FireFinder Marine

8-Zone Conventional Board

The 8 Zone Conventional Board has been designed to interface with AMPAC's range of fire alarm control panels. The board supports 8 conventional zones and connects to the fire panel via the internal dedicated RS485 communications port.



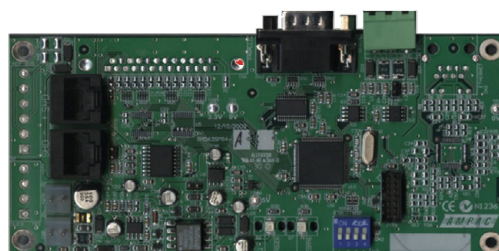
- Each zone accommodates up to 40 Apollo Marine Orbis conventional detectors
- Can be programmed to function in one of the following modes:
 - Normal (latching)
 - Non-latching/Self Reset

FireFinder Marine

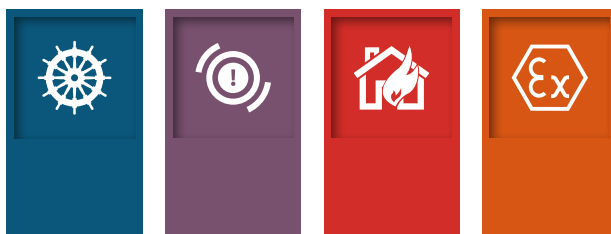
Universal High Level Interface Board

The High Level Interface (HLI) Expander Board provides the ability for the FireFinder Marine fire panel to interface to a range of systems using common communication protocols.

Individual events such as fire or pre-alarms, can be configured to be passed to the various external systems for reporting and indication.



- Voyage Data Recorder (VDR) interfacing - converts system status, alarms and events to NMEA 0183 Standard compliant strings
- SmartView Graphical Event management system interface
- Modbus output



Marine and offshore

Addressable Fire Detection

FireFinder *Marine*

FireFinder Marine

SmartView Graphical Repeater package



Smartview is an innovative new graphics package that allows you to access, control and maintain your intelligent addressable fire detection system from a single touch screen monitor.

The Smartview package will display detector locations across the ships layout and give you the ability to fully operate your fire alarm system from a user friendly interface. It also enables remote access and multiple user accessibility giving you complete control across your vessel. Designed to work with single or networked Firefinder Marine panels, the Smartview package

enables you to remove the need to access the physical panel and allows a clean and more aesthetically pleasing finish on a ships bridge.

- Simple graphical navigation enables the rapid location of events
- Easy to operate user interface
- Historical event logs all activity
- Zone and device text are displayed from the panel
- Event response action text
- Assignable user log-in permissions
- Extensible architecture



Marine and offshore

Addressable Fire Detection



Discovery Marine Optical Smoke Detector

- IP44
- Unaffected by wind or atmospheric pressure
- Suitable for bedrooms, escape routes
- Approved by Lloyd's Register, DNV, ABS, MCA, BV, MED



Discovery Marine Multisensor Detector

- IP44
- Optical smoke and thermistor temperature sensors
- High immunity to false alarms
- Approved by Lloyd's Register, DNV, ABS, MCA, BV, MED



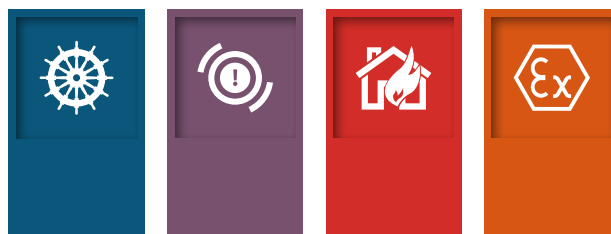
Discovery Marine Heat Detector

- IP54
- Rate-of-rise/static
- Ideal in dirty/smoky environments
- Approved by Lloyd's Register, DNV, ABS, MCA, BV, MED



Discovery Marine Addressable Mounting Base

- XPERT Addressing
- One way fit
- Locking feature
- Stainless steel contacts
- Approved by DNV, ABS and MED



Marine and offshore

Addressable Fire Detection



XP95 IS Optical Smoke Detector

- IP23D
- 'Light scatter' optical detection
- Intrinsically safe (suitable for zone 0)
- Approved by Lloyd's Register, DNV, ABS, MCA, BV, MED



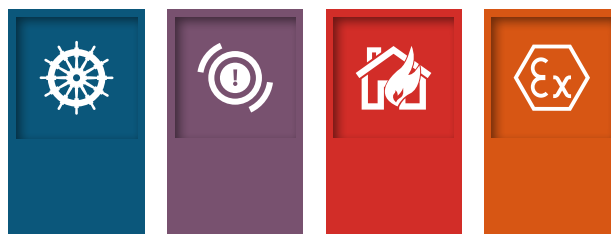
XP95 IS Heat Detector

- IP23D
- Rate of rise/static
- Intrinsically safe (suitable for zone 0)
- Approved by Lloyd's Register, DNV, ABS, MCA, BV, MED



XP95 IS Addressable Mounting Base

- XPERT Addressing
- One way fit
- Locking feature Stainless steel contacts
- Approved by DNV, ABS and MED



Marine and offshore

Addressable Fire Detection



Apollo

Discovery Marine Addressable Call Point

The Discovery Marine Manual Call Point has been approved for use in indoor marine applications such as cruise liners. When operated, the manual call point interrupts the polling cycle for a fast response.



- MED approval
- IP24D
- 17-28Vdc
- -20°C to +60°C
- Two-wire supply
- Polycarbonate/ABS
- Flush or surface mounted

Apollo

Discovery Marine Waterproof Manual Call Point

The Discovery Marine Waterproof Manual Call Point has been designed for use outdoors and in places where moisture can occur. It is compliant with EN54-11 and can be used with the Discovery Marine range.



- MED approval
- IP67
- 17-28Vdc
- -20°C to +60°C
- Two-wire supply
- Polycarbonate/ABS
- Flush or surface mounted



Marine and offshore

Extinguishing Control Panel



Nano Marine

Extinguishing Control Panel

The NANO Extinguishing Panel has been developed and intended for the activation of modular extinguishing systems.

The NANO is small and compact and can therefore secure locations where a standard fire/extinguishing panel is not applicable or unsuitable.

The operation is simple, straightforward, and designed in accordance with EN54-2 for fire alarm and alarm systems, EN12094-1 for fixed fire suppression systems.

Due to its construction, the NANO is resistant to vibrations and shocks and is therefore very suitable for the protection of engine compartments of ships and machine areas.

The NANO is equipped with a double fire extinguisher activation technique, intended for the activation of electrically activated fire extinguishers or the activation of a so-called solenoid.

By achieving the DNV certification the NANO panel is a first of its kind in being approved for marine use.



- DNV-CG 0339-2021 type approval
- Double 24vdc power supply connection
- Compact size
- Event log
- Double action activation



Marine and offshore

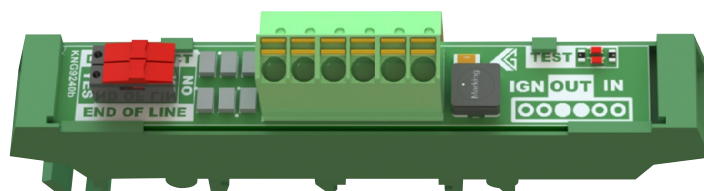
Extinguishing Control Panel



Nano ETB

Extinguishing Release Board

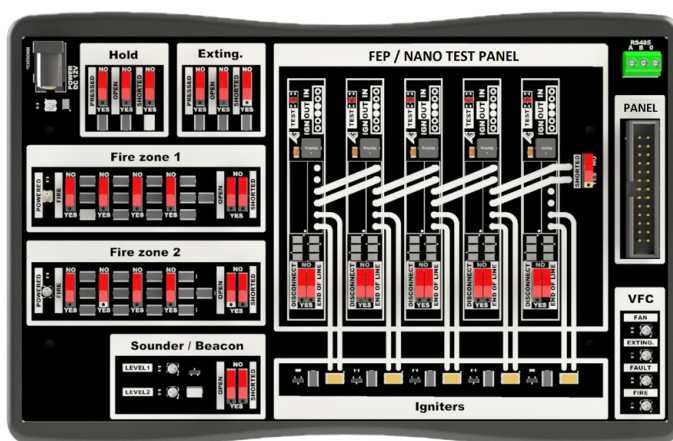
The ETB is specially developed for the Nano Extinguishing release panel and aerosol extinguishers. This terminal connection board is equipped with built-in security electronics, which ensures that all igniters of the extinguishing units are actually activated. Together with an end line switch, this option turns the Nano extinguishing release panel system into a complete and reliable fire detection and extinguishing system. The ETB generator terminal board unit is available in a built-in 35 mm DIN rail version.



Nano FTM

Functional Test Module

The FTM test module is specifically developed for testing the Nano system. The nano FTM is easy to operate and is designed to test the system and the programming in a simple manner. By periodically maintaining, checking and testing the Nano system, the possibility of hidden errors, defects and incorrect programming is prevented. This is done by systematically checking the functionality of the Nano and FTM system. Partly to check whether the entered programming and the functions, alarms, controls and alerts function properly, but also to check the systems in an easy and reliable manner for any system malfunctions that may be present.



Marine and offshore

Conventional Fire Panels



These panels have been designed to minimise labour costs by providing ample space for tasks such as wiring and changing batteries. Simple colour coded buttons give the user confidence in correctly managing their fire alarm system and the one person walk tests will help reduce the cost of maintaining the system. A host of configuration and programming options are provided, including; programmable inputs & outputs, false alarm management, muster alarm and programmable output delays.

Esento Marine

2-4 Zone



- 2 or 4 zones
- Inputs for sounder ringing & pulsing
- Fire & fault relays
- 2 monitored sounder circuits
- Earth fault monitoring
- One person walk test
- Integral 1.25 Amp switch mode PSU
- Space for up to 3.2Ah batteries
- False alarm management modes
- Muster alarm
- 12 month warranty



Marine and offshore

Conventional Fire Panels



Esento Marine

8-12 Zone



- 8 - 12 zones
- Integral 2.5 Amp switch mode PSU
- Space for up to 7Ah batteries
- Programmable inputs
- Programmable relays & outputs
- Up to 6 monitored sounders
- Modular expansion zone cards available
- 3 false alarm management modes
- Muster alarm
- Zonal programming
- Programmable output delays
- Supports up to 8 repeater panels
- 12 month warranty



Marine and offshore

Conventional Fire Panels



Esento Marine

12-Way Repeater Panel

The Esento Marine repeater panel has the same intuitive controls and indications as the main control panel but mounted in a smaller cabinet. The repeaters are fully functional with 'Silence', 'Resound' and 'Reset' controls, as well as 'Disable' and 'Test Mode' functions. It is also possible to disable the controls for each or all repeater panels to make them passive (indication only). Up to 8 repeater panels can be supported on a Esento 8-12 zone system.



- 12 zonal fire & fault indications
- Class change & pulsing inputs
- Programmable outputs
- Fully functional or passive
- Test mode & disablement functions
- Integral 1A switch mode PSU



Marine and offshore

Conventional Fire Panels



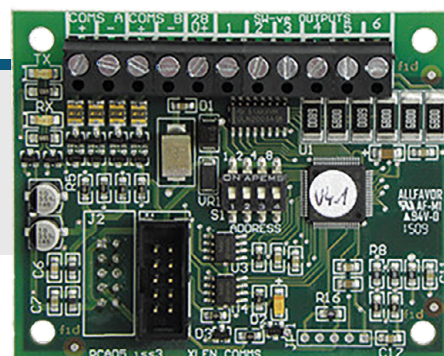
Esento Marine

Network Comms Card

This comms card simply plugs in on top of the main circuit board of the control panel to allow up to 8 control panels to

be networked. In addition to the control panels up to 8 repeater panels or remote display units can also be added to the network.

- Network up to 8 control panels
- Up to 8 additional repeater panels on the network
- Card includes 6 programmable switch -ve outputs



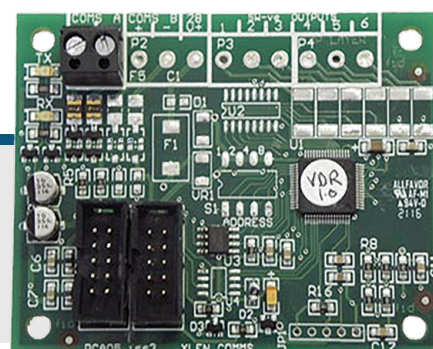
Esento Marine

VDR Card

Esento Marine VDR allows the connection between the conventional fire detection system and the ships voyage data recorder.

This simple plug-in card is easy to connect and provides data in accordance with IEC 61162-1 Ed.3

- Data Output: RS485, ASCII characters, BAUD rate: 4800, data bits 8 (D7=0), parity 0, stop bits 1
- Designed to: IEC 61162-1 Ed.3



Marine and offshore

Conventional Fire Detection



Orbis Marine Optical Smoke

- Wide voltage range (8.5 - 33Vdc)
- Optical smoke detector
- IP23D
- 4 second sampling frequency
- Approved to MED, DNV, KRS, LR, CCS, BV and ABS



Orbis Marine Multisensor Detector

- Wide voltage range (8.5 - 33Vdc)
- Thermistor and optical smoke detector
- IP23D
- 4 second sampling frequency
- Approved to MED, DNV, KRS, LR, CCS, BV and ABS



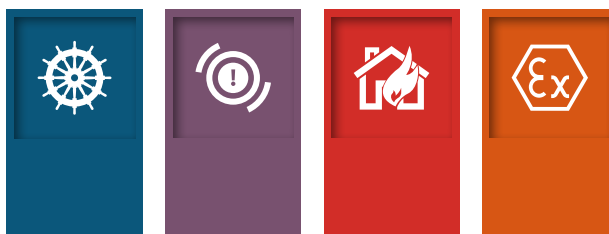
Orbis Marine Heat Detector

- Wide voltage range (8.5 - 33Vdc)
- Heat detector (thermistor)
- IP23D
- 4 second sampling frequency
- Approved to MED, DNV, KRS, LR, CCS, BV and ABS
- Wide temperature range available



Series 65M U.V. Flame Detector

- Compact UV Flame Detector
- Base Mounted
- Sensitive to UV spectrum for early detection
- Approved by CCS, ABS and MED



Marine and offshore

Conventional Fire Detection



Time Saver Marine Base

- Grouped terminals to make wiring easy
- Detector locking mechanism
- Decrease installation time
- Approved to MED, DNV, KRS, LR, CCS, BV and ABS



Time Saver Marine Relay Base

- Grouped terminals to make wiring easy
- Detector locking mechanism
- Decrease installation time
- Relay output
- Approved to MED, DNV, KRS, LR, CCS, BV and ABS



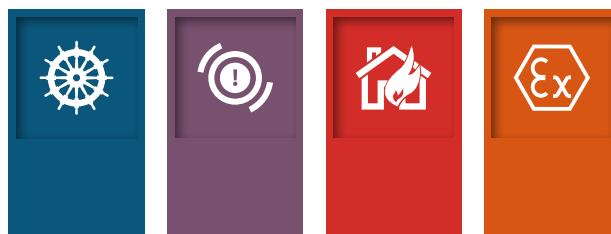
Series 65 Marine Base

- For use with Series 65 Marine UV flame detector
- Easy installation
- Approved by CCS, ABS and MED



Apollo Deckhead Mounting Box

- Compatible with all Apollo marine bases
- Protects against water ingress and provides improved performance
- Ideal for bulkhead fixing



Marine and offshore

Conventional Fire Detection



Orbis IS Optical Smoke

- 14 - 28Vdc
- Optical smoke detector
- IP23D
- 4 second sampling frequency
- Approved to ATEX, IECEX, MED, DNV, KRS, LR, CCS, BV and ABS



Orbis IS Multisensor Detector

- 14 - 28Vdc
- Thermistor and optical smoke detector
- IP23D
- 4 second sampling rate
- Approved to ATEX, IECEX, MED, DNV, KRS, LR, CCS, BV and ABS



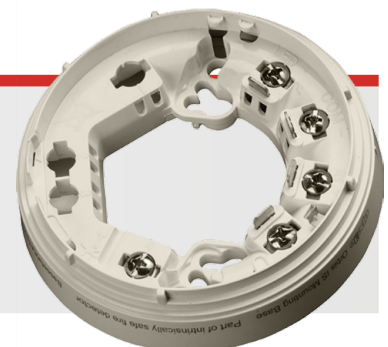
Orbis IS Heat Detector

- 14 - 28Vdc
- Heat detector (thermistor)
- IP23D
- 4 second sampling rate
- Approved to ATEX, IECEX, MED, DNV, KRS, LR, CCS, BV and ABS



Orbis IS Time Saver Base

- Grouped terminals to make wiring easy
- Detector locking mechanism
- Decrease installation time
- Approved to ATEX, IECEX, MED, DNV, KRS, LR, CCS, BV and ABS



Marine and offshore

Conventional Fire Detection



SOC-E3NM Marine Approved Photoelectric Smoke Detector

- Wide voltage range (9.5 - 30Vdc)
- Remote indicator output
- Removable chamber
- MED and DNV approved



DCD-AE3M Combined Heat Detector (fixed temp & rate or rise 60°C)

- Wide voltage range (9.5 - 30Vdc)
- Remote indicator output
- Rate of rise heat detector
- MED and DNV approved
- 60°C heat sensing element



DCD-CE3M Combined Heat Detector (fixed temp & rate or rise 90°C)

- Wide voltage range (9.5 - 30Vdc)
- Remote indicator output
- Rate of rise heat detector
- MED and DNV approved
- 90°C heat sensing element



DRD-EM Marine IR Flame Detector

- Up to 25m range
- Remote indicator output
- Single IR technology
- MED and DNV approved
- Fits standard MED base



YBN-R/6-M Marine Approved Standard Base

- Accepts 2.5mm cables
- MED and DNV approved
- Electronics free
- Integral remote indicator output
- Small 8mm profile



Marine and offshore

Conventional Fire Detection



SOC-E-IS Intrinsically Safe Smoke Detector

- ATEX Classification to: Ex ia IIC
T5 Ga (-20°C ≤ Ta ≤ +55°C)
- Remote indicator output
- MED and DNV approved
- Removable, high performance chamber



DCD-1E-IS Intrinsically Safe Heat Detector

- Rate of rise heat detector
- 60°C fixed temperature element
- Suitable for category 1
- ATEX Classification to II 1G EEx ia IIC
T5 Tamb=55C
- MED and DNV approved



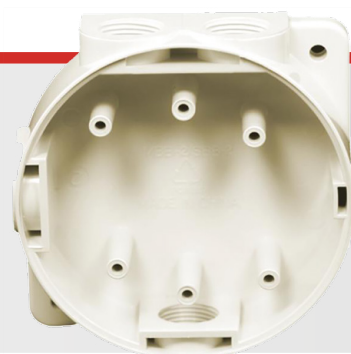
YBN-R/4(IS) Intrinsically Safe Detector Base

- Accepts 1 to 2.5mm cables
- Electronics free
- Small 8mm profile
- MED and DNV approved
- Dedicated cable screen terminal



MBB2 Deckhead Mounting Box

- Compatible with both Apollo and Hochiki bases
- 4 cable entry holes suitable for cable glands (2 glands supplied)
- Ivory or white colours available
- Provides moisture and dust resistant fixing
- Ideal for bulkhead fixing
- Approved by LR and DNV GL



Marine and offshore

Conventional Fire Detection



Apollo

55100-021MAR Indoor Call Point

Installation time and ultimately cost, are of paramount importance to any fire or security installer. The MCP range directly reflects this need by providing a unique 'plug and play' concept designed specifically to reduce installation time.



- IP24D
- Up to 30Vdc
- -10°C to +55°C
- Two-wire supply
- ABS
- Flush or surface mounted

Apollo

55100-022MAR Weather Resistant Call Point

The outdoor WCP is an IP67 sealed manual call point product. The enhanced environmental protection allows the unit to be installed in many external environments where water and dirt are likely to be present, making it a true waterproof and outdoor product.



- IP67
- Up to 30Vdc
- -25°C to +70°C
- Two-wire supply
- ABS
- Flush or surface mounted



Marine and offshore

Flame and Gas Detectors



FGD

UV/IR Flame Detector

The FlameSpec-UV-IR flame detector provides ultra-fast response, high performance and reliable detection of a large variety of fires including hydrocarbon fires (visible and nonvisible), as well as Hydrogen fires.

The detector addresses slow growing fires as well as fast eruptions of fire using

improved UV IR technology.

The detector operates in all weather and light conditions.

- ATEX
- IECEX
- MED
- FM
- SIL2



FGD

Triple IR Flame Detector

FlameSpec-IR3-HD is the next generation of the IR3 flame detector. It is being introduced to further enhance the protection and safety for these high risk and high value industries.

The FlameSpec-IR3-HD Triple IR (IR3) flame detector will detect fires and explosions extremely fast, thus allowing

preventative action to be initiated even more rapidly and minimizing the consequences!

- ATEX
- IECEX
- MED
- FM
- SIL2



Marine and offshore

Flame and Gas Detectors



Crowcon

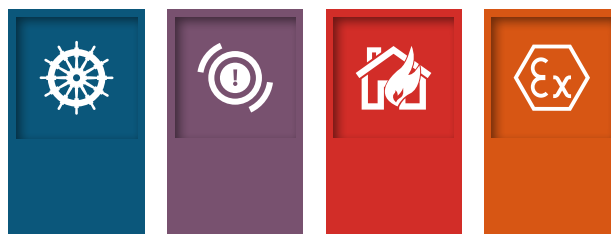
SMART S-MS MED Gas Detector

The SMART S-MS MED is designed specifically for use in marine environments and is certified by the Lloyd's Register in accordance with MED/3.54 Regulation.

The device is SIL2 certified and has options for both catalytic and infrared sensors for the detection of flammable gases.

Housed in an aluminum die cast painted enclosure, it is UV and chemically resistant, making it suitable for harsh marine environments

It has 4-20mA analogue output, alongside alarm relays and serial RS485 output meaning it can be easily fitted to any system.



Marine and offshore

Audio/Visual Alarm Equipment



VTB

- 99dB(A)
- 1Hz LED
- 32 tones, 2 stage alarm
- IP21C(shallow)/IP33C(deep)
- 24Vdc
- Lens: amber/red
- MED approved



VTG

- 102dB(A)
- 32 tone, 2 stage alarm
- IP21C(shallow) or IP33C(deep)
- 24Vdc
- Red or white
- MED approved



SONFL1X

- 100dB(A)
- 1Hz Xenon strobe
- 10 tones, 2 stage alarm
- IP66
- 12Vdc/24Vdc/115Vac/230Vac
- MED and DNV approved



Marine and offshore

Audio/Visual Alarm Equipment



AL105NX

- 113dB(A)
- 1Hz Xenon strobe
- 64 tones, 4 stage alarm
- IP66
- 24Vdc/28Vdc
/24Vac/115Vac/230Vac
- MED and DNV approved



AL112NX

- 120dB(A)
- 1Hz Xenon strobe
- 64 tones, 4 stage alarm
- IP66
- 12Vdc/24Vdc/48Vdc
/24Vac/115Vac/230Vac
- MED and DNV approved



AL121X

- 124 db(A)
- 1Hz Xenon beacon
- 64 tones, 4 stage alarm
- IP66
- 12Vdc/24vdc/48vdc
/115Vac/230Vac
- MED and DNV approved



Marine and offshore

Audio/Visual Alarm Equipment



SONF1

- 100dB(A)
- 10 tones, 2 stage alarm
- IP66
- 24Vdc
- Red, white or grey
- MED and DNV approved



A105N

- 113dB(A)
- 64 tones, 4 stage alarm
- IP66
- 24Vdc/48Vdc/115Vac/230Vac
- MED and DNV approved



A112N

- 120dB(A)
- 64 tones, 4 stage alarm
- IP66
- 24Vdc/48Vdc/115Vac/230Vac
- MED and DNV approved



Marine and offshore

Audio/Visual Alarm Equipment / Hazardous Area Sounder Beacons



A121

- 124 db(A)
- 64 tones, 4 stage alarm
- IP66
- 12Vdc/24vdc/48vdc /115Vac/230Vac
- MED and DNV approved



BEXS110D

- 110dB(A)
- 32 tones, 3 stage alarm
- IP66 & 67 (third party tested)
- 24Vdc
- Explosion proof
- MED and DNV approved



D1XS1F Explosion Proof Sounder Beacon

- 64 Alarm tones
- 4 stages
- 24VDC, 100-240VAC,
- IECEX, ATEX, UL, SIL1 and SIL2 approved
- EN54, MED, DNV



D1XB2X05 Explosion Proof Beacon

- 5 Joule Beacon
- 7 Lens colours
- 24VDC, 100-240VAC
- IECEX, ATEX, UL, SIL1 and SIL2 approved
- EN54, MED, DNV



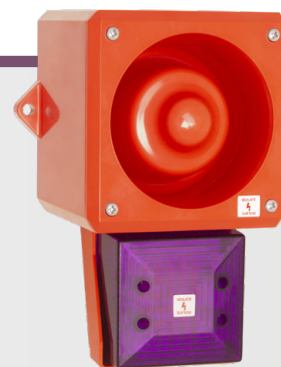
Marine and offshore

Audio/Visual Alarm Equipment



YL50 Hi Vis Sounder Beacon

- 112 db (A) / 1 m
- IP66
- High Brightness LED Beacon
- 32 selectable tones meeting international regulations
- Flame retardant ABS enclosure
- Stainless steel fixings
- 2 stage alarm
- Independently selectable second stage
- Lens available in eight colours
- Low current consumption



YL80 Hi Vis Sounder Beacon

- 116 dB(A) @ 1m
- IP66
- High Brightness LED Beacon
- 32 selectable tones meeting international regulations
- Flame retardant ABS enclosure
- Stainless steel fixings
- 2 stage alarm
- Independently selectable second stage
- Lens available in eight colours



YL80 Super Hi Vis Sounder Beacon

- 120 db (A) @ 1 m
- IP66
- High Brightness LED Beacon
- 32 selectable tones meeting international regulations
- Stainless steel fixings
- 2 stage alarm
- Independently selectable second stage
- Lens available in eight different colours





www.scanmarine.dk
Scanmarine DK Aps
Egensevej 25, 2770 Kastrup
Denmark
+4581949820
info@scanmarine.dk

