



AUTONAUTIC  
the compass specialist

# The world's lead specialist company in magnetic compasses

---



Designed and manufactured in  
Barcelona for over 50 years

# Autonautic **Promise**

Our unique guarantee ensures our promise to fully support you before, during and after your purchase. We will advise you which of our products best suits your needs, support you during the installation, if you need our help, and assure you of an excellent ongoing aftercare service. We offer a lifetime guarantee for repair or replacement.

The most important thing for us is that you are wholly satisfied with our quality equipment.

## **Marine equipment advice.**

We guarantee to help you maintain the product at all times and in all conditions thus extending its life.

Use the QR code present in the packaging or visit our website for all that you need to know about the technical, installation and maintenance details. If you need more help, please contact us.

## **Ongoing maintenance and repair services.**

Our in-house service centre exists to ensure your equipment remains in peak condition to give you trouble-free navigation.

If the equipment is damaged, in need of a replacement part or needs serious maintenance it will be restored and returned to you in no time.

## **Our repair and replacement policy.**

We are committed to producing quality, reliable marine equipment.

In the unlikely event your item fails, at any time during its useful life, due to a manufacturing defect, we guarantee to repair or replace it with immediate effect, free of charge.



# Content

ABOUT US

MAGNETIC COMPASS SERVICES

AUTONAUTIC PRODUCTS

## **SMALL COMPASSES**

HANDBEARING COMPASS

SURFACE COMPASSES

## **CLASS B MAGNETIC COMPASSES**

BRACKET MOUNT COMPASSES (C12)

FLUSH MOUNT COMPASSES (C12/110) (C12PLUS) (C15/150)

BRACKET MULTIDIRECTIONAL COMPASSES (C8)

BULKHEAD MOUNT COMPASSES (C9) (C10)

DECK MOUNT COMPASSES (C15) (CHE)

BINNACLE & BRACKET PROFESSIONAL COMPASSES (CHH)

WOODEN BOX COMPASSES (C4)

## **PROFESSIONAL MARINE PELORUS**

## **CLASS A WORKBOAT MAGNETIC COMPASSES**

REFLECTOR BINNACLE COMPASSES

WOODEN BOX COMPASS

BRACKET MOUNT COMPASS

TMC SENSOR NMEA0183

COMPASS CARD HEADING REPEATER

## **CLOCKS, METEOROLOGY**

MINOR SERIES 72mm

ATLANTIC SERIES 95mm

PACIFIC SERIES 120mm

INDIC SERIES 175mm

## **MARINE PROFESSIONAL QUARZ CHRONOMETERS**

# Our Story

In 1975, Joaquim Fabregat, already experienced in repairing compasses and navigation instruments, founded Autonautic Instrumental S.L., in a small workshop in Barcelona. There, the first magnetic compasses, marine clocks and weather instruments were manufactured.

The company quickly expanded, acquiring a national reputation for delivering high quality products which continued to survive the not infrequent extreme weather conditions at sea. Many products manufactured 40-50 years ago are still in service today.

In 2004, Marc Fabregat - Joaquim's son - joined the company and took over the management. From then, the company opened up to international markets. Currently, more than 80% of our products are exported worldwide. In response to demand from more than 45 countries our range of products has increased significantly.

Autonautic is now located in El Masnou, a traditional seafaring's village, a short distance from Barcelona. Our nautical precision instruments -which include magnetic compasses, clocks, barometers, clinometers, thermometers and hygrometers- are assembled, adjusted and tested on our premises by our experienced workforce. Our products are subject to continuous assessment.

Today, the company is the world's leading specialist in magnetic compasses. Autonautic Instrumental are the only company in the world who, as well as designing and manufacturing our own products, we repair whatever magnetic compasses' brand on our own premises (over 5,500 'other brand' repaired to date), and we also able offer compass adjustments on board, within any main port, or remotely , anywhere in the world, with the support of our own expert qualified compass adjuster.

For over 50 years, after have sold more than 70.000 compasses and more than 45.000 instruments and clocks, our priority has been to support our customers in providing high-quality, cost-effective navigation equipment.



**Designed and manufactured in  
Barcelona for over 50 years**



# Magnetic **Compass Service**

## Autonautic, the world's leading specialist in magnetic compasses

Autonautic provides ships compass surveys, compass adjusting services, replacement and installation on-board your vessel. Within the shortest time, no matter where you are. Autonautic has implemented and maintain ISO 9001:2015 Quality Management System for the following scope:

**Design, manufacture, repair of magnetic compasses for navigation & magnetic compass adjustment on board and remote services.**

Whatever you need related to magnetic compasses, no matter where you are, Autonautic will try to support and give you the best and quickest solution.

## Compass **repair & exchange**

### Multi-brand

#### **COMPASS REPAIR SERVICE**

With routine maintenance, we can ensure that your vessels will have a standard magnetic compass on which they can rely, in any situation.

Autonautic Instrumental offers professional magnetic compass repair service, complying the highest standards of quality. Your compass will be restored to perfect working order in the shortest possible time, wherever the vessel is located.

Over 5.500 repairs and a profound knowledge of compass manufacturing provide us with the required experience to repair any type of magnetic compass with total confidence.

As well as saving the customer money we have an environmentally friendly policy for our planet as we endeavour to repair and extend the life of this equipment.

#### **COMPASS EXCHANGE PROGRAM**

Additionally, we provide a Compass Exchange Program. We have a wide and permanent stock of reconditioned and duly certified compasses of the main brands ready to be sent to any destination in the world.

##### **Our usual stock:**

C-PLATH / SPERRY MARINE TYPE 2060
SARACOM MC-180
NUNOTANI R165
CASSENS & PLATH TYPE 11 & 12
SAURA SR-165
TOKIMEC / TOKYO KEIKI SH/HB-165A
LUDOLPH M55



# Compass Adjustment

## On board & Remote

**24/7 On board or remote compass adjustment service in all ports of Spain and major ports of the world.**

Our qualified compass adjusters are ready to perform magnetic compass adjustment ON BOARD in all the ports in Spain, Europe and worldwide.

Once the compensation has been carried out, we deliver the adjustment certificate and the deviation curve on board.

However, in the last years, REMOTE magnetic compass adjustment service is increasingly in demand. Shipowners worldwide rely on our remote compass adjustment service to assist their captains perform on-board magnetic compass swing. Customers get professional results, lower operating costs and a competitive price get fast professional.

With this remote service the Ship Master receives professional advice from our qualified compass adjuster. This service requires prior data verification and pictures of the compass before the service. Once the magnetic compass and data have been verified, our adjuster performs the calculations. If the result is correct and the deviations are within the regulations (less than  $3^\circ$ ), we issue the new compass adjustment certificate and deviation curve immediately. If deviations are more than 3 degrees, our technician will contact the vessel and instruct the Captain / Chief officer of the next steps in order to get the compass perfectly adjusted before issuing the certificate.



# Magnetic Compasses

## Our compasses

We manufacture a wide range of high-quality marine compasses, attractively designed for any type of boat, either for the leisure market or professional and commercial vessels. Since Autonautic was founded our aim always has been to ensure that every compass we produce will provide years of accuracy and reliability.

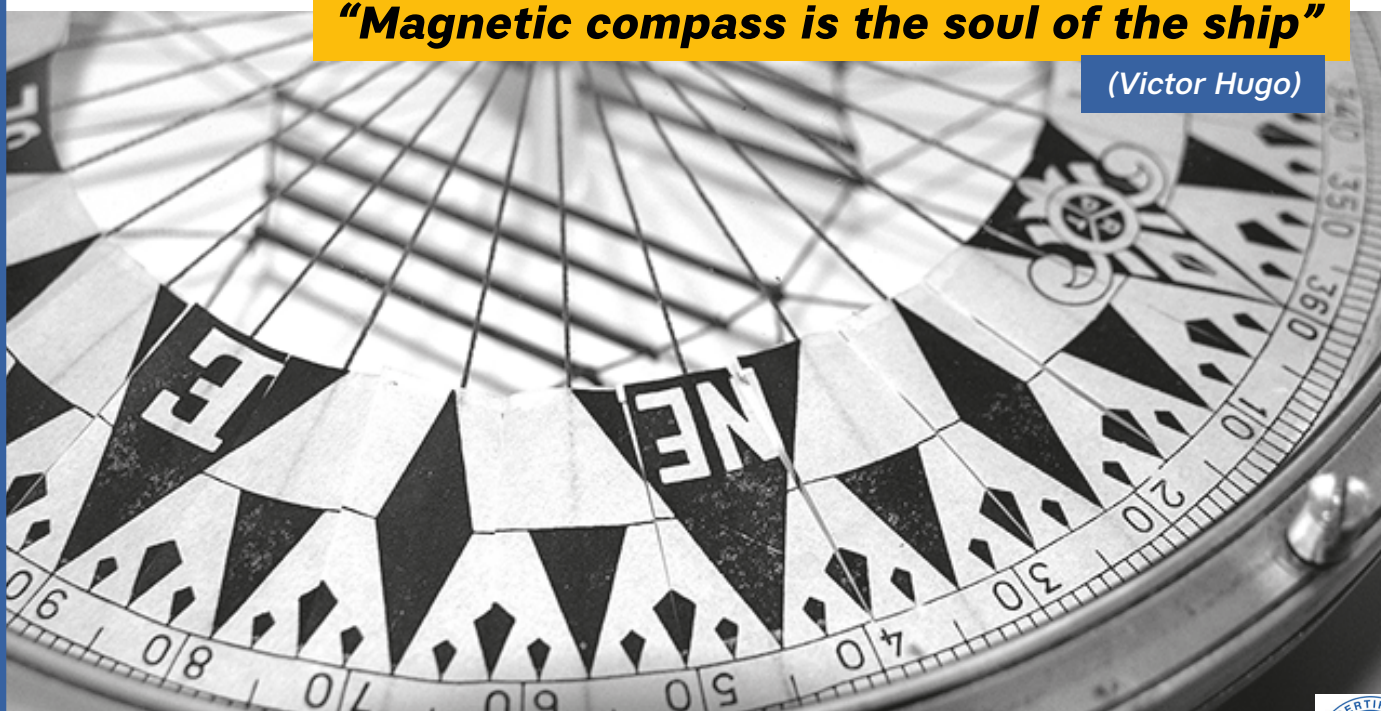
All our marine compasses are in compliance with Directive 2014/90/EC on Marine Equipment with Implementing Regulation (EU) 2023/1667 of 8 August 2023 and in accordance with the Regulations, to provide you with a compass that guarantees maximum safety in Navigation. Apart from our smallest compass for RIB or dinghy and the hand bearing compass, all the other models are provided with MED/SOLAS certificate either Class B or Class A products.

A distinctive characteristic of Autonautic compass' dials is that they do not need to be balanced to compensate for dip caused by the earth's magnetic field. This feature makes them suitable for all navigation zones (the only exception being in the Southern extreme latitudes). This is of great advantage to customers who may not always know where, exactly, the ship will navigate.

Despite the current advances in designing and manufacturing, the value of personal craftsmanship is essential and invaluable. Autonautic's technicians evaluate each component from our suppliers, manufacture and assemble all the pieces that go into every compass, test and check that everything is in perfect working order before shipping. Manufacturing magnetic compasses

***"Magnetic compass is the soul of the ship"***

***(Victor Hugo)***



# Compass

## V-FINDER

### Handbearing compass

This versatile V-FINDER Handheld Compass is a modern and ergonomic tool that is shock, water and sand resistant, perfect for both right and left-handed users. With its light weight and durable construction, it delivers accurate bearings, a memory ring and a photoluminescent dial for easy reading in low light.

This compass offers both hand-held bearing functionality and traditional compass use, with red guidelines for improved visibility and fluid-damped stability for accurate readings even in turbulence. Prepare for any adventure with the reliability and precision of the V-FINDER, designed to enhance your navigation experience and increase your confidence.



#### LIGHT & ERGONOMIC

The smooth finish feels soft in your hand, and it will not slip, even if it is wet.

#### ACCURATE BEARING

Hardened pivot and double cup stone are a guarantee of long life and shock resistance of your V-FINDER compass.

#### MEMORY RING

The V-FINDER also has a memory ring for setting the desire course.

#### PHOTOLUMINECESCENT DIAL

Completely maintenance free.

#### HI-TECH BOTTOM CELL

Engineered using ultra-sonic welding, it acts like an expansion membrane eliminating bubbles and leaks.

#### AMBIDEXTROOUS DESIGN

It manages to achieve an unparalleled level of comfort both for right and lefthanded users.



## FEATURES

*Two functions: handbearing & traditional compass*

*Memory Ring*

*Field of view: 30°*

*Photoluminescent dial*

*Red rubber line*

*Weight: 90g*

*Fluid Damped*



# Compass

## C3 RANGE

### Surface mount RIB & dinghy

The C3 compasses are the smallest compasses produced by Autonautic. They are a popular choice for small craft such as RIB's, dinghies and traditional built sailing skiffs. The popularity of this compass is in part due to the surface mounting - no unsightly aperture needs cutting, the only drilling necessary is 3 small holes for the screw fixings.

The compass has a highly visible 65mm card - the card is spherical so readable from a wide range of viewing angles. The card is well damped to cope with harsh and demanding conditions encountered on RIB installations.

Here is our smallest compass and ideally suited for use in a RIB or dinghy. This surface mount compass is easily mounted on a flat surface so no hole is required. It is well damped to cope with the greater range of movement in a RIB or dinghy and features a spherical card that is easy to read when standing up or sitting down.



C3001



C3002

#### FEATURES

65mm conical card

5° graduation

1 lubber line

12V

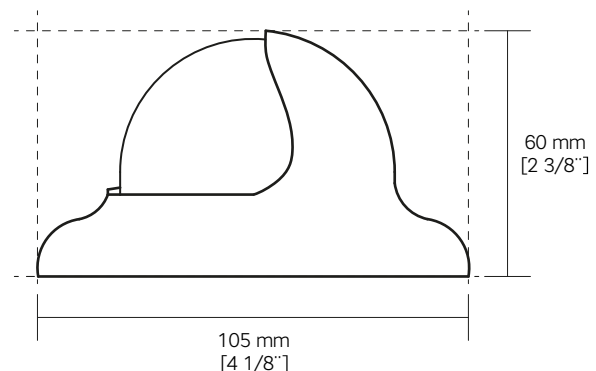
5 years warranty

Sapphire jewel / hardened steel pivot  
dial movement.

#### APPROVALS

ISO 25862:2019

ISO 9001:2015



Member of CISQ Federation



# Compass

## C12 RANGE

### Bracket mount compass

The C12 bracket mount compasses is one of the most popular compasses in our range and the best option for Rescue & Lifeboats. This bracket allows a multitude of options for mounting and the compass design allows optional compass adjustment kit.

The stylish design ensures that the compass looks at home on pleasure craft yet the rugged construction allows commercial applications. And with features such as corrosion-resistant materials and sealed construction to prevent water intrusion this compass provides reliable heading source for safe navigation at sea.

#### FEATURES

85mm flat or conical card

5° graduation

Anti-glare screen

12/24 V lighting

Optional compass adjustment kit

Individual MED/SOLAS certificate included

Repairable

Exclusive 5 years warranty

#### APPROVALS

Directive 2014/90/EC on marine equipment

ISO 25862:2019

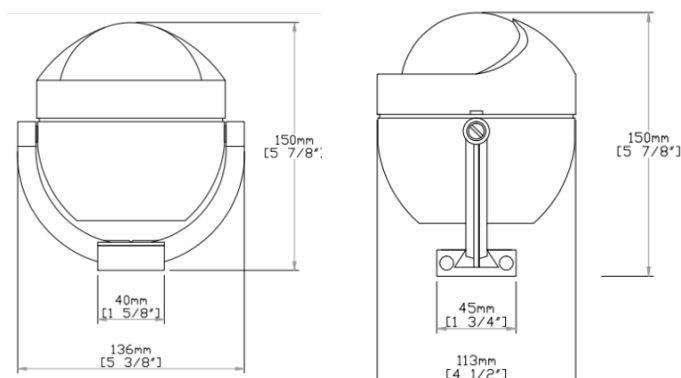
ISO 9001:2015



C12-001



C12-002



# Compass

## C12 RANGE

### Bracket mount compass

The C12 bracket mount compasses is one of the most popular compasses in our range and the best option for Rescue & Lifeboats. This bracket allows a multitude of options for mounting and the compass design allows optional compass adjustment kit.

The stylish design ensures that the compass looks at home on pleasure craft yet the rugged construction allows commercial applications. And with features such as corrosion-resistant materials and sealed construction to prevent water intrusion this compass provides reliable heading source for safe navigation at sea.



C12-003



C12-004

### FEATURES

85mm flat card

5° graduation

Anti-glare screen

12/24 V lighting

Optional compass adjustment kit

Individual MED/SOLAS certificate included

Repairable

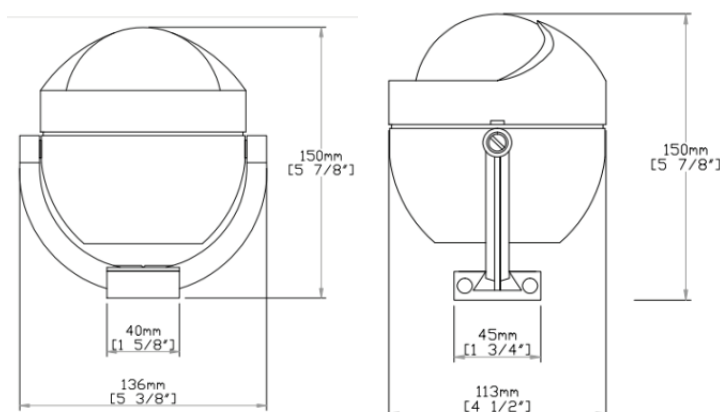
Exclusive 5 years warranty

### APPROVALS

Directive 2014/90/EC on marine equipment

ISO 25862:2019

ISO 9001:2015



Member of CISQ Federation



# Compass

## C12PLUS RANGE

### Flush mount compass

The C12 Plus is a versatile flush mount compass suitable for both commercial and leisure vessels. The flat card design requires that the compass be installed close to the helm position and low down, for example when the vessel is helmed from the standing position.

Typical applications would include being installed on the navigation console or sitting atop a steering pedestal.

The compass features a fairly wide flange so it can be a good choice when replacing an existing compass - the flange sizes allows installation where a large aperture has already been cut or can be used to cover fade marks on the console.

#### FEATURES

85mm flat card

5° graduation

Anti-glare screen

12/24 V lighting

Optional compass adjustment kit

Individual MED/SOLAS certificate included

100% Repairable

Exclusive 5 years warranty

Protective cover included

#### APPROVALS

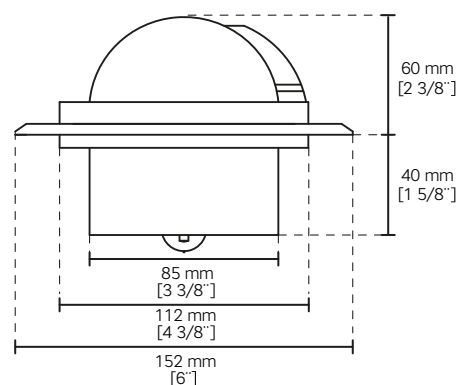
Directive 2014/90/EC on marine equipment

ISO 25862:2019

ISO 9001:2015



C12Plus-0020





# Compass

## C12PLUS RANGE

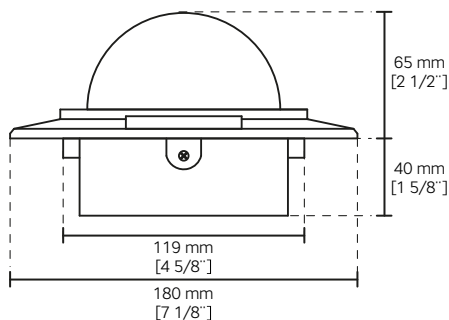
### Flush mount compass

The C12 Plus is a versatile flush mount compass suitable for both commercial and leisure vessels. The flat card design requires that the compass be installed close to the helm position and low down, for example when the vessel is helmed from the standing position. Typical applications would include being installed on the navigation console or sitting atop a steering pedestal.

The compass features a fairly wide flange so it can be a good choice when replacing an existing compass - the flange sizes allows installation where a large aperture has already been cut or can be used to cover fade marks on the console.



C12Plus-0021



### FEATURES

100mm flat card

5° graduation

Protective cover

12/24 V lighting

Optional compass adjustment kit

Individual MED/SOLAS certificate included

100% Repairable

Exclusive 5 years warranty

### APPROVALS

Directive 2014/90/EC on marine equipment

ISO 25862:2019

ISO 9001:2015



Member of CISQ Federation



CERTIFIED MANAGEMENT SYSTEM  
ISO 9001

# Compass

## C12/110 RANGE

### Flush mount compass

The C12/110 flush mount compass is one of the most popular compasses in our range and the best option for tenders and motor boats. Its special design of the inner gimballed system allows the installation on inclined panels without losing the horizontality of the dial. The stylish design ensures that the compass.

And with features such as corrosion-resistant materials and sealed construction to prevent water intrusion this compass provides reliable heading source for safe navigation at sea.

#### FEATURES

85mm flat card

5° graduation

Anti-glare screen

12/24 V lighting

Powerful Directive Force Magnets for Fast  
Heading Lock-on

Individual MED/SOLAS certificate included

100% Repairable

Exclusive 5 years warranty

Installation on flat or inclined panels



C12/110-0010



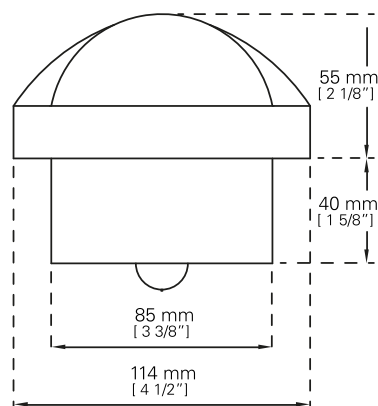
C12/110-0012

#### APPROVALS

Directive 2014/90/EC on marine equipment

ISO 25862:2019

ISO 9001:2015



# Compass

## C12/110 RANGE

### Flush mount compass

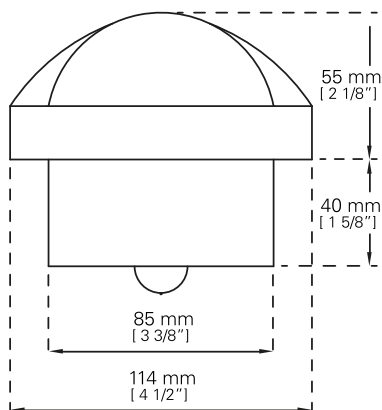
The C12/110 flush mount compass is one of the most popular compasses in our range and the best option for tenders and motor boats. Its special design of the inner gimbal system allows the installation on inclined panels without losing the horizontality of the dial. And with features such as corrosion-resistant materials and sealed construction to prevent water intrusion this compass provides reliable heading source for safe navigation at sea.



C12/110-0011



C12/110-0014



### FEATURES

- 85mm conical card
- 5° graduation
- Anti-glare screen
- 12V lighting
- Powerful Directive Force Magnets for Fast Heading Lock-on
- Individual MED/SOLAS certificate included
- 100% Repairable
- Exclusive 5 years warranty
- Installation on flat or inclined panels

### APPROVALS

- Directive 2014/90/EC on marine equipment
- ISO 25862:2019
- ISO 9001:2015



Member of CISQ Federation



# Compass

## C12/110 RANGE

### Flush mount compass

The C12/110 flush mount compass is one of the most popular compasses in our range and the best option for tenders and motor boats. Its special design of the inner gimbal system allows the installation on inclined panels without losing the horizontality of the dial. And with features such as corrosion-resistant materials and sealed construction to prevent water intrusion this compass provides reliable heading source for safe navigation at sea.

#### FEATURES

85mm flat card

5° graduation

Anti-glare screen

12/24 V lighting

Powerful Directive Force Magnets for Fast

Heading Lock-on

Individual MED/SOLAS certificate included

100% Repairable

Exclusive 5 years warranty

Installation on flat or inclined panels

#### APPROVALS

Directive 2014/90/EC on marine equipment

ISO 25862:2019

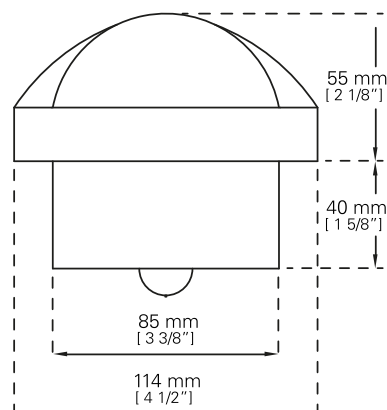
ISO 9001:2015



C12/110-0013



C12/110-0015





# Compass

## C8 RANGE

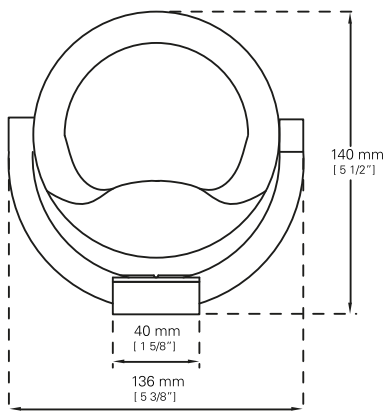
### Bracket Mount/Roofline compass

The Multidirectional Bracket Mount Compass C8-0025, is a modern and stylish compass designed for power, sailboats and medium workboats.

It features adjustable mounting options suitable for horizontal, roof, or vertical surfaces. This compass not only provides functionality but also boasts a contemporary design, making it a valuable addition to any vessel's equipment.



C8-0025



#### FEATURES

85mm conical card

5° graduation

Anti-glare screen

12V lighting

Individual MED/SOLAS certificate included

Repairable

Exclusive 5 years warranty

Multidirectional bracket mount

#### APPROVALS

Directive 2014/90/EC on marine equipment

ISO 25862:2019

ISO 9001:2015



ROOFMOUNT



LATERAL MOUNT



Member of CISQ Federation



CERTIFIED MANAGEMENT SYSTEM  
ISO 9001

# Compass

## C8 RANGE

### Bracket Mount/Roofline compass

The C8-0027 bracket mount compass is one of our most popular and versatile workboat compasses. The compass is based on a vertical bulkhead style of compass so can be viewed from a wider range of angles.

Look at the C8-0027 bracket mount compass card, your trusty sidekick for any sailing adventure! Designed to handle the toughest seas, this compass is as stylish as it is sturdy, perfect for motorboats, yachts, or sailboats. Easy to install on any flat surface or boat roof, it gives you accurate readings no matter the conditions, guiding you safely through your journey.

#### FEATURES

100mm conical card

5° graduation

Deck shoe mounting

12/24 V lighting

Individual MED/SOLAS certificate included

Optional compass adjustment kit

100% Repairable

Exclusive 5 years warranty

#### APPROVALS

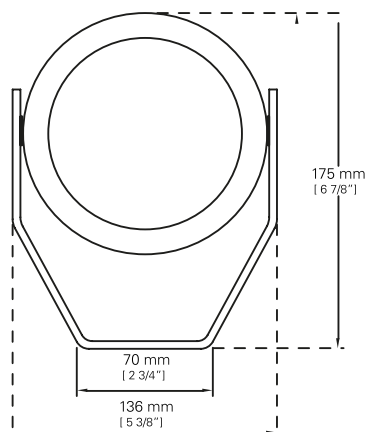
Directive 2014/90/EC on marine equipment

ISO 25862:2019

ISO 9001:2015



C8-0027



ROOFLINE  
INSTALLATION

# Compass

## C10 RANGE

### Bulkhead mount power & sailboats

The C10 range of compasses is a versatile class B bulkhead mount compass suitable for both commercial and leisure vessels. The compass is available in two sizes; 85mm and 100mm diameter cards.

The Bulkhead C10-0037 meticulously crafted with sailing boats in mind, presents a timeless and pragmatic answer to your navigational requirements. Its sleek black finish effortlessly melds with the visual appeal of your vessel, adding an elegant touch to its interior, while its sturdy build guarantees resilience against the harsh conditions encountered at sea. This compass is not just a navigational tool but a statement piece, enhancing both the functionality and aesthetics of your boat.



C10-0037

#### FEATURES

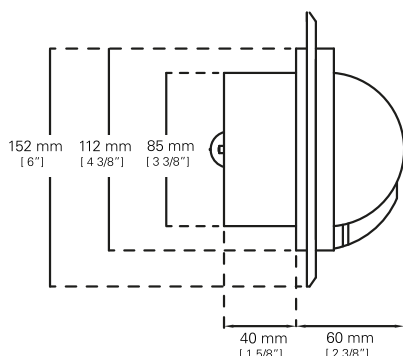
- 85mm conical card
- 5° graduation
- Anti-glare screen
- 12V lighting
- Individual MED/SOLAS certificate included
- Repairable
- Exclusive 5 years warranty
- Protective cover



PROTECTION COVER

#### APPROVALS

- Directive 2014/90/EC on marine equipment
- ISO 25862:2019
- ISO 9001:2015



Member of CISQ Federation



CERTIFIED MANAGEMENT SYSTEM  
ISO 9001

# Compass

## C10 RANGE

### Bulkhead Mount compass

The C10 range of compasses is a versatile class B bulkhead mount compass suitable for The Bulkhead Mount Compass C10-0038 with 100mm card, meticulously crafted with sailing boats in mind, presents a timeless and pragmatic answer to your navigational requirements. Its sleek black finish effortlessly melds with the visual appeal of your vessel, adding an elegant touch to its interior, while its sturdy build guarantees resilience against the harsh conditions encountered at sea. This compass is not just a navigational tool but a statement piece, enhancing both the functionality and aesthetics of your boat.

#### FEATURES

100mm conical card

5° graduation

Anti-glare screen

12V lighting

Individual MED/SOLAS certificate included

Optional compass adjustment kit available

Repairable

Exclusive 5 years warranty

Protective cover



C10-0038

#### APPROVALS

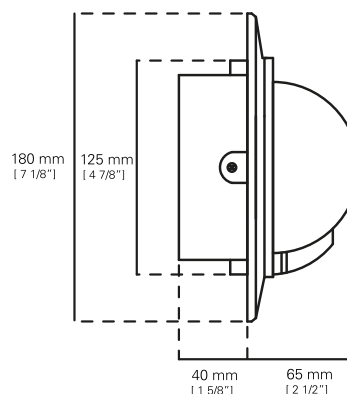
Directive 2014/90/EC on marine equipment

ISO 25862:2019

ISO 9001:2015



PROTECTION COVER





# Compass

## C9 RANGE

### Bulkhead mount power & sailboats

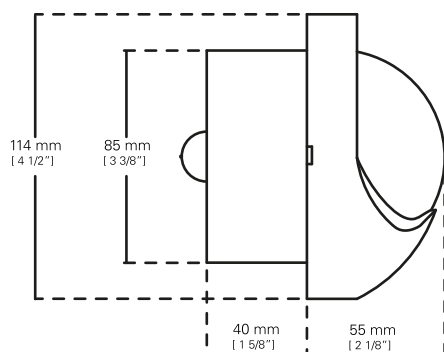
The Bulkhead Mount Compass 85mm Flat Card, meticulously crafted with sailing boats in mind, presents a timeless and pragmatic answer to your navigational requirements. Its sleek black/white finish effortlessly melds with the visual appeal of your vessel, adding an elegant touch to its interior, while its sturdy build guarantees resilience against the harsh conditions encountered at sea. This compass is not just a navigational tool but a statement piece, enhancing both the functionality and aesthetics of your boat.



C9-0030



C9-0031



### FEATURES

- 85mm conical card
- 5° graduation
- Anti-glare screen
- 12v lighting
- Individual MED/SOLAS certificate included
- Repairable
- Exclusive 5 year warranty
- 85mm mounting hole

### APPROVALS

- Directive 2014/90/EC on marine equipment
- ISO 25862:2019
- ISO 9001:2015



Member of CISQ Federation



# Compass

## C15/150 RANGE

### Bulkhead Mount power & sailboat

The C15 flush mount compass is one of the most popular compasses in our range and the best option for Power & Sailboats. This flush mount allows a multitude of options for mounting and the compass design allows optional compass adjustment kit.

Due to its stylish design and rugged construction, the compass looks perfectly on pleasure craft yet and also allows commercial applications.

And with features such as corrosion-resistant materials and sealed construction to prevent water intrusion this compass provides reliable heading source for safe navigation at sea.

#### FEATURES

100mm flat card

5° graduation

Anti-glare screen

12/24 V lighting

Individual MED/SOLAS certificate included

Optional compass adjustment kit

Repairable

Protective cover

Exclusive 5 years warranty

#### APPROVALS

Directive 2014/90/EC on marine equipment

ISO 25862:2019

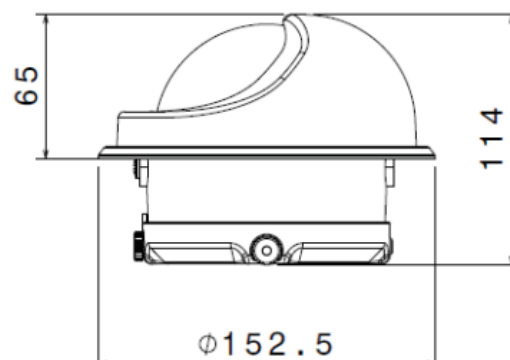
ISO 9001:2015



C15/150-0063



C15/150-0065



# Compass

## C15/150 RANGE

### Bulkhead Mount power & sailboats

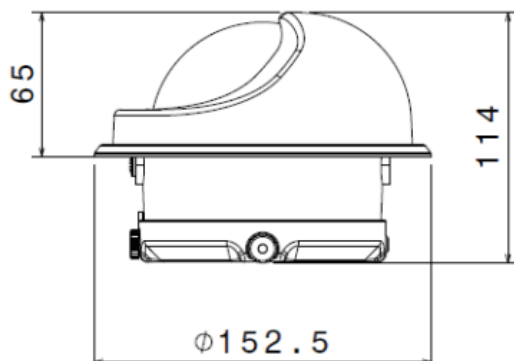
The C15 flush mount compass is one of the most popular compasses in our range and the best option for Power & Sailboats. This flush mount allows a multitude of options for mounting and the compass design allows optional compass adjustment kit.

Due to its stylish design and rugged construction, the compass looks perfectly on pleasure craft yet and also allows commercial applications.

Designed with comfort and practicality in mind, this compass features a flush-mount design that blends seamlessly into the cockpit of any vessel. Its black finish adds a touch of elegance and modernity while minimizing distracting reflections that can distract the skipper.



C15/150-0064



## FEATURES

- 100mm conical card
- 5° graduation
- Anti-glare screen
- 12/24 V lighting
- Individual MED/SOLAS certificate included
- Repairable
- Optional compass adjustment kit
- Exclusive 5 years warranty

## APPROVALS

- Directive 2014/90/EC on marine equipment
- ISO 25862:2019
- ISO 9001:2015



# Compass

## C15 RANGE

### Deck Mount compass

The C15 compass is the smaller of the binnacle compasses manufactured by Autonautic (The larger version being the CHE). The compass is available in a range of colours and card styles.

Our C15 range of marine compasses can be mounted on the deck or of your boat, for a refined look to match your interior. Our provides reliable navigational and are essential for safe and accurate navigation, both at sea and on inland waterways.

#### FEATURES

100mm flat card
5° graduation
Aluminum pedestal
Anti-glare screen
12/24 V lighting
Individual MED/SOLAS certificate included
Repairable
Exclusive 5 years warranty
Built-in compensators to easily adjust for deviation

#### APPROVALS

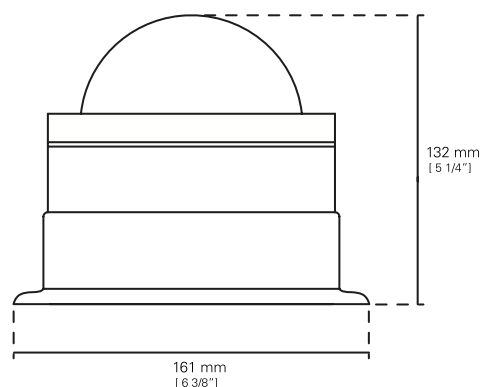
Directive 2014/90/EC on marine equipment
ISO 25862:2019
ISO 9001:2015



C15-0048



C15-0050



# Compass

## C15 RANGE

### Deck Mount compass

The C15 compass is the smaller of the binnacle compasses manufactured by Autonautic (The larger version being the CHE). The compass is available in a range of colours and card styles.

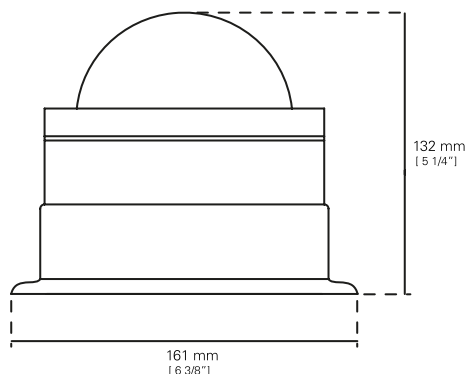
Our C15 range of marine compasses can be mounted on the deck or of your boat, for a refined look to match your interior. Our provides reliable navigational and are essential for safe and accurate navigation, both at sea and on inland waterways.



C15-0049



C15-0052



### FEATURES

100mm conical card

5° graduation

Aluminum pedestal

Anti-glare screen

12/24 V lighting

Individual MED/SOLAS certificate included

Repairable

Exclusive 5 years warranty

Built-in compensators to easily adjust for deviation

### APPROVALS

Directive 2014/90/EC on marine equipment

ISO 25862:2019

ISO 9001:2015



Member of CISQ Federation





# Compass

## CHE RANGE

### Deck Mount compass

With a 140mm diameter card, the CHE compass is one of the largest binnacle mount compasses available on the market. This model is only available with a flat card with a choice of black or white body.

The CHE has two mounting options - the 0073 and 0074 have an external flange with fixing holes. This compass is suitable for both large pleasure craft and medium sized workboats. Illumination and B+C compensation system is supplied as standard. Optional D-Quadrantal corrector kit ref. CHE-QC can be supplied for steel hulled boats.

#### FEATURES

140mm flat card

5° graduation

12/24 V lighting

Individual MED/SOLAS certificate included

Repairable

Exclusive 5 years warranty

Protective cove

Built-in compensators to easily adjust for deviation

#### APPROVALS

Directive 2014/90/EC on marine equipment

ISO 25862:2019

ISO 9001:2015



CHE-0073



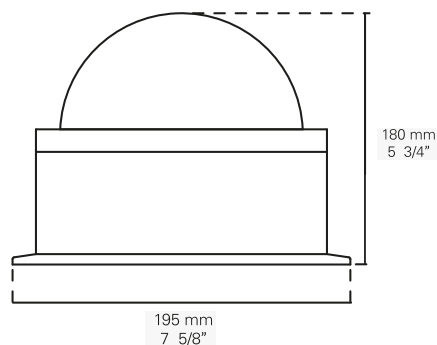
CHE-0074

#### OPTIONAL ACCESSORIES



CHE-QC

Quadrantal corrector for steel hulled boats



# Compass

## CHE RANGE

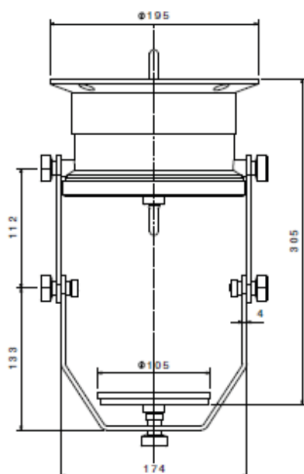
### Overhead compass

The CHE-0078 model is a compact, rugged, and cost-effective steering compass suitable for professional coastal navigation and larger yachts. The CHE-0078 overhead compass meets European MED ("Wheelmark") and all important international specifications. It comes with B+C compensation built-in and D-Quadrantal correctors for steel hulls are available.

With its proven quality and reliability, this compass is the perfect choice for sailors who seek precision and durability during their seafaring adventures.



CHE-0078



### FEATURES

125mm 5.75" dial

1° graduation

12/24 V lighting

Individual MED/SOLAS certificate included

Repairable

5 years warranty

B+C correctors built-in

Hardened steel pivot and sapphire jewel

Built-in compensators to easily adjust for deviation

Optional D-Correctors for steel hulls

### APPROVALS

Directive 2014/90/EC on marine equipment

ISO 25862:2019

ISO 9001:2015



Member of CISQ Federation



# Compass

## CHH BINNACLE MOUNT

### Lifeboats & rescue boats

The CHH-0090 Compass is based on a traditional design of lifeboat compass. The unit comprises an externally gimballed compass enclosed in a weather proof ABS binnacle. Lighting is provided by a clip-on waterproof illumination unit - this may be stowed separately when not in use. Although most lifeboats are fully enclosed now, there is still a demand for this classic style of compass and it would meet the requirements for IMPA code 330211 "LIFEBOAT COMPASS 100MM, WITH COVER".

#### FEATURES

100mm flat card

2.5° graduation

1 lubber line

Individual MED/SOLAS certificate

360° gimbal

Exclusive 5 years warranty

100% repairable

#### APPROVALS

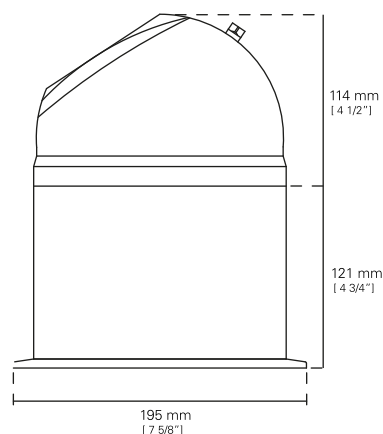
Directive 2014/90/EC on marine equipment

ISO 25862:2019

ISO 9001:2015



CHH-0090



# Compass

## CHH RANGE

### Bracket mount flat compass

The CHH-0096 is a fully gimballed marine compass based on a traditional design. The unit comprises a fully gimballed compass mounted on a marinated aluminium bracket with a deck shoe for easy mounting.



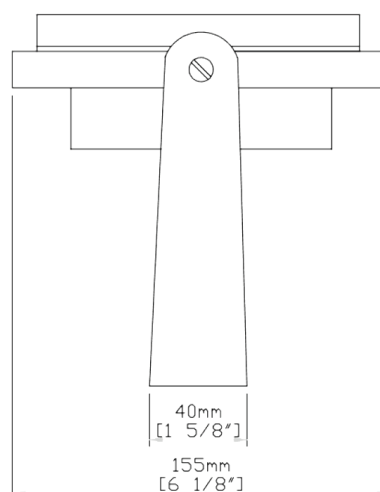
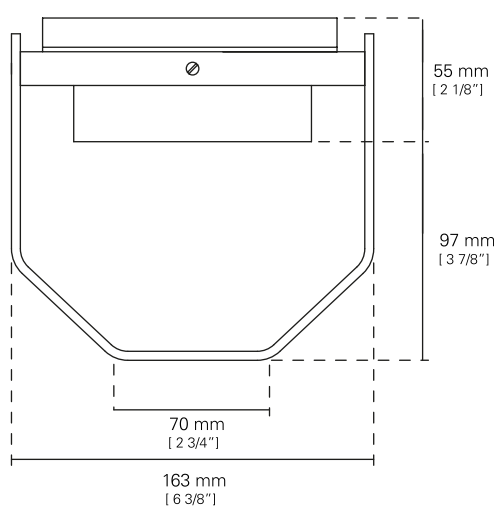
CHH-0096

#### FEATURES

- 100mm flat
- card 2.5° graduation
- 1 lubber line
- Individual MED/SOLAS certificate
- 360° gimbal
- Exclusive 5 years warranty
- 100% repairable

#### APPROVALS

- Directive 2014/90/EC on marine equipment
- ISO 25862:2019
- ISO 9001:2015



Member of CISQ Federation



# Compass

## C4 RANGE WOODEN BOX

### Gimballed lifeboats & rescue boats

For traditional compass for small crafts and lifeboats and rescue boats we have a selection of compasses specifically designed for this application. - this compass can be permanently mounted on any horizontal surface. In this C4-00114 there is no a battery operated led light. If there is not sufficient space to mount a compass or a permanently mounted compass is not desirable, we two boxed compasses that have MED approval.

The C4 range comprises of two boxed compasses with a varnished wooden box, one with an 85mm card and the other with a 100mm card (C4-00114) - the box sizes are 155 x 135 x 155mm (C4-00108) and 190 x 190 x 130mm (C4-00114) respectively. These compasses can be stowed in a secure location until required.



C4-00114



#### FEATURES

- 100mm flat card
- 2,5° graduation
- 1 lubber line
- Individual MED/SOLAS certificate
- Exclusive 5 years warranty
- 100% repairable

#### APPROVALS

- Directive 2014/90/EC on marine equipment
- ISO 25862:2019
- ISO 9001:2015



# Compass

## C4 RANGE WOODEN BOX

### Lifeboats & rescue boats

For traditional compass for small crafts and lifeboats and rescue boats we have a selection of compasses specifically designed for this application. - this compass can be permanently mounted on any horizontal surface. In this C4-00108 there is a battery operated led light. If there is not sufficient space to mount a compass or a permanently mounted compass is not desirable, we have two boxed compasses that have MED approval.

The C4 range comprises of two boxed compasses with a varnished wooden box, one with an 85mm card and the other with a 100mm card (C4-00114) - the box sizes are 155 x 135 x 155mm (C4-00108) and 190 x 190 x 130mm respectively. These compasses can be stowed in a secure location until required.



C4-00108



#### FEATURES

85mm flat card

5° graduation

1 lubber line

Individual MED/SOLAS certificate

1,5V LED Light

Exclusive 5 years warranty

100% repairable

#### APPROVALS

Directive 2014/90/EC on marine equipment

ISO 25862:2019

ISO 9001:2015



Member of CISQ Federation



CERTIFIED MANAGEMENT SYSTEM  
ISO 9001



# MARINE PROFESSIONAL PELORUS

Watch relative bearings change, predict crossing situations, plot offshore fixes with a 3 arm protractor, or check your compass by sun or stars. These are some of the things you can do with a pelorus. Large ships have permanently mounted peloruses, or some that can be mounted in deck shoes. On a smaller scale, these portable peloruses will give you many of the same benefits. A compass adjuster will find this a very nice instrument when calling on an assignment.

# Compass

## TAX-00122

### Professional Grade Boxed Pelorus

On larger vessels the pelorus can be an aid to watch officers for predicting crossing situations and avoiding collisions. The instrument is also useful for checking current position, for instance, in determining the moment at which an aid to navigation is broad on the beam or measuring pairs of relative bearings which can be used to determine distance off and distance abeam of a navigational aid.

In traditional navigation the pelorus can be used to determine current position by plotting 3 bearings of known objects or checking current heading in relation to sun or stars. The pelorus is also an invaluable tool for Compass adjusters compass deviation can be determined by comparing compass reading to the sun's azimuth or known bearings of distant objects such as navigation aids or lighthouses.

#### FEATURES

125mm card size

1° graduation

Gimballed

Sighting Vanes

Exclusive 5 years warranty

Individual MED/SOLAS certificate included

Black velvet protection bag for storage

#### APPROVALS

ISO 9001:2015



TAX-00122



Member of CISO Federation



# Compass

## TAX-00123

### Professional Grade Shoe Mount Pelorus

Watch relative bearings change, forecast collision situations, arrange offshore with a 3-arm protractor, or check your compass against the sun or stars.

These are some of the things you can do with a pelorus. Large ships have permanently mounted peloruses, or some that can be mounted in deck shoes. On a smaller scale, these portable peloruses will give you many of the same benefits. A compass adjuster will find this a very nice instrument when calling on an assignment.

The Professional Grade Shoe Mount Pelorus is stored in its plywood box by resting on two lower gimbals. For operational use, the pelorus is raised to engage two upper gimbals in the box. The plywood box size is 8.25 " square x 7.25 " high and is finished in natural wood tones.



TAX-00123

#### FEATURES

125mm card size

1° graduation

Gimballed

Sighting Vanes

Exclusive 5 years warranty

Individual MED/SOLAS certificate included

Marine grade aluminum bracket

Two deck shoe mounting plates

Black velvet protection bag for storage

#### APPROVALS

ISO 9001:2015







# COMMERCIAL **CLASS A** **MAGNETIC** **COMPASSES**



# Compass

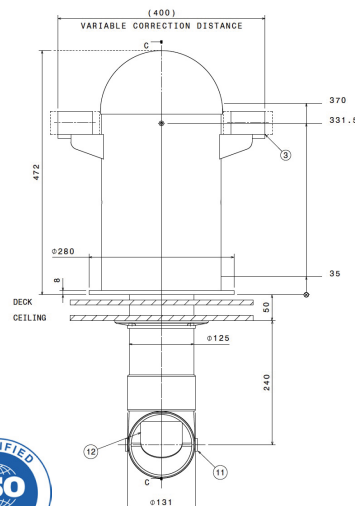
## C20-00130

### Reflector compass binnacle for worldwide use

The C20-00130 it's a compact, rugged and cost-effective reflector magnetic compass for locations where the available space is limited. Designed for midsize commercial, fishing, workboats and offshore boats. It meets European MED ("Wheelmark"), USCG approval, the UK Marine Equipment Certificate (MER) and all important international specifications. Suitable for use with Transmitting Magnetic compass (TMC) equipment to operate repeaters like the C20-00133 Autonautic compass repeater and, off-course alarms and outputs to navigation equipment including gyro back up.



**C20-00130**



### FEATURES

- 125mm card CLASS A magnetic compass
- 1 degree gradutation
- Textile waterproof cover
- B+C compensation system built-in
- Quadrantal correctors for steel hull
- Arrangements for NMEA0183 TMC sensor
- Marine Aluminium binnacle grade
- 24 vdc lighting (main ans supply LED light)
- 10 Years exclusive warranty
- Reduced shipyard installation

## SCOPE OF SUPPLY



Textile waterproof cover



Periscope



Light junction box

## APPLICATIONS

Deepsea

Workboats

Fishing

Yachting

## ENVIRONMENTAL

IEC 60945 Equipment category: Exposed Area

Operating temperature: -30°C to 60°C

Compass safe distance: Read ISO 25986:2019 Annex F

## OPTIONAL ACCESORIES

C20-00131 Spare compass in wooden box

C20-00132 NMEA018 pick up coil

C20-00136 Azimuth ring / Sighting vanes

## APPROVALS

Directive 2014/90/EC on marine equipment

ISO 25862:2019

ISO 9001:2015

UK MER TYPE APPROVED



# Compass

## C20-00128

### Table top/reflector magnetic compass

The C20-00128 is a compact, rugged and cost-effective tabletop or reflector magnetic compass for locations where the available space is limited. Designed for midsize commercial, fishing and work boats.

It meets European MED ("Wheelmark"), USCG approval, the UK Marine Equipment Certificate (MER), and all important international specifications. Suitable for use with Transmitting Magnetic compass (TMC) equipment to operate repeaters like the C20-00133 Autonautic compass repeater and, off-course alarms and outputs to navigation equipment including gyro back up.



**C20-00128**

#### FEATURES

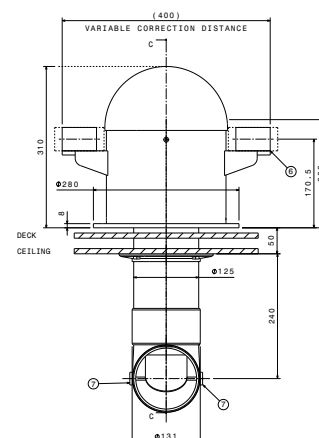
- 125mm card Class A compass
- 1 degree graduation
- Arrangements for NMEA0183 TMC sensor
- Marine grade aluminium binnacle
- Quadrantal correctors for steel hull
- Waterproof textile cover
- 10 years warranty
- Optional azimuth device
- Reduced shipyard installation

#### OPTIONAL ACCESORIES

- C20-00131 Spare compass in wooden box
- C20-00140 B+C corrector system
- C20-00132 NMEA018 pick up coil
- C20-00136 Azimuth / Sighting vanes
- C20-00135 Periscope tube

#### APPROVALS

- Directive 2014/90/EC on marine equipment
- USCG Type Approved
- ISO 9001 certified management system
- ISO 25862:2019
- IEC 60945:2018
- IMO Res. A. 694 (17)
- IMO Res. MSC.36 (63)-(1994 HSC Code)13
- IMO Res. MSC.97 (73)-(2000 HSC Code)13
- IMO Res. MSC.302(87))
- Type Approval: RINA
- UK MER TYPE APPROVED



# Compass

## C20-00131

### Spare magnetic compass

The C20-00131 is primarily intended as a spare compass for our C20 range of workboat compasses, ensuring, ensuring compliance with maritime regulations that require backup navigation equipment. Its robust design and official certifications make it suitable for use in challenging marine environments.



C20-00131

#### FEATURES

- 125mm Dial Size
- Flat Card Design
- Graduation every degree with cardinal markings
- Wooden Box Dimensions: 245 x 245 x 135 mm
- Sliding cover
- 10 years warranty

#### APPROVALS

- Directive 2014/90/EC on marine equipment
- ISO 25862:2019
- ISO 9001:2015
- UK MER TYPE APPROVED





# Compass

## C20-00137

### Deck shoe bracket mount compass

The C20-00137 is a rugged and cost-effective deck shoe mounting. A magnetic compass and it comes with graduated scale to take bearings. It meets European MED ("Wheelmark"), UK-Marine equipment certification-MER & USCG approval.

Suitable for use with Transmitting Magnetic compass (TMC) equipment to operate repeaters like the C20-00133 compass repeater and, off-course alarms and outputs to navigation equipment including gyro back up.

#### FEATURES

- 125mm card Class A compass
- Marine grade aluminium bracket-mount compass
- Powerful DirectiveForce Magnets for
- Fast Heading Lock-on
- Bulkhead or panel installation
- Mounting deck shoe for easy installation
- Exclusive 10 years warranty



C20-00137

#### OPTIONAL ACCESORIES

- C20-00140 B+C corrector system
- C20-00141 D-Corrector for steel hull
- C20-00132 NMEA018 pick up coil
- C20-00136 Azimuth ring / Sighting vanes



#### APPROVALS

- Directive 2014/90/EC on marine equipment
- ISO 25862:2019
- ISO 9001:2015
- UK MER TYPE APPROVED





# Compass

## C20-00132 TMC SENSOR

### Pick-up coil NMEA0183

This NMEA compass pickup coil is fitted underneath one of our externally gimballed compasses converting it to a Transmitting Magnetic Compass (TMC) with direct NMEA0183 capability. The pick up senses the magnetic field and generate a NMEA0183 \$HCHDG sentence. The TMC is ready to work once power is applied and only needs connecting to a NMEA0183 receiving device. This significantly simplifies and speeds up installation time for a TMC.



C20-00132

## FEATURES

- 5 pin connector
- 3mt cable supplied
- IP68
- NMEA-0183
- 8-30V Supply (see notes)
- Manual calibration with PC software
- Mounting plate included
- Over-strength field protection

## APPLICATIONS

- Marine Compass Pickup
- Rudder Angle
- Trim-tab angle
- Shaft-angle Encoder



# Compass

## C20-00133

### Compass card heading repeater

The C20-00131 is our compass card repater designed to be both attractive and easy-to-use giving you at-a-glance information wherever you are and peace of mind that all is well above deck.

Although completely weather-proof to IP67 for outside applications the displays can be also be mounted in the saloon where the information can be made available to all those onboard in a way which is visually compatible with the interior design.

Marine Indicators designed to be both attractive and easy-to-use giving you at-a-glance information wherever you are and peace of mind that all is well above deck.

Although completely weather-proof to IP67 for outside applications the displays can be also be mounted in the saloon where the information can be made available to all those onboard in a way which is visually compatible with the interior design. Functional for use at the helm, styled to enhance your life below deck.



C20-00133

#### FEATURES

*Shows heading on a moving compass card*

*Clear 'at a glance' analogue display*

*Intuitive, single function simplicity*

*Backlit for clear night use*

*Surface mount installation to avoid need to cut holes*

*Functional for use at the helm but styled to fit in and enhance your world below deck*

#### MECHANICAL

Dimensions: 110 x 110 x 32.5 mm

Cable Length: 4m

Weather Resistance: Sealed to IP67

# CLOCKS, WEATHER INSTRUMENTS & CHRONOMETERS

Our products combine traditional design and the stylishness of the finest nautical clocks and weather instruments.

Designed with attention to detail, Autonatic clocks and instruments combining functionality with aesthetics, offering different models and styles.

Our products look in perfect conditions surviving the not infrequent extreme weather conditions at sea.

- / Gold flash 18 karats
- / Maintenance-free
- / Solid brass cases
- / Ultra-hard finish that will never tarnish or scratch
- / Lifetime warranty on finish and clock movement



## EASY FIX SYSTEM

Our medium range of products (95mm and 120mm series) goes with the new easy fix system, to ensuring easy operation and installation. This system allows access to the movements, battery replacement, or adjustment without having to remove the wall fixing.



# QUARTZ MARINE CHRONOMETER

## Professional quartz gimballed chronometer

Classical gimballed professional marine quartz chronometer with Roman numerals and inner Arabic numerals, mounted in a varnished wood and brass carriage case. While technically not a true chronometer in the strict sense — that being a clock with a constant rate of error — the quartz movement is of the finest German manufacture, the U.T.S. Co., and deserves the highest rating that a quartz movement can have. UTS is the number one producer of quartz movements in Europe, and produces movements for the famous Junghans quartz clocks.

The box itself is made from fine grade beechwood with a mahogany finish, and 18 karats gold flashing on all metallic fixtures. The clock is encased in a solid brass, gold flashed housing with a 5mm thick crystal glass bezel which is beveled on its circumference. The clock has a 12-hour Roman numeral dial with sweep second hand.

Guaranteed accuracy is less than 1 second per day error.

### SPECIFICATIONS

*Battery: IEC R6+ (AA)*

*Quartz Frequency: 32.786 KHz*

*Operation Voltage: 1.2V - 1.7V*

*Time Keeping Accuracy: Din 8325*

*Operating Temperature Range: -5°C +50°C*

*Battery life: 2 years*

### FEATURES

*BOX DIMENSIONS: 200 x 200 x 185mm*

*DIAL: 110mm*

*CASE FINISH: Gold flash 18k brass*

*WARRANTY: 5 years*





# QUARTZ MARINE CHRONOMETER

## Professional marine chronometer

The clock is on an inclined bed for easy viewing with the top opened, or even with it closed due to the clear panel mounted in the top.

Classical professional marine quartz chronometer with roman numerals mounted in a varnished wood and brass carriage case. While technically not a true chronometer in the strict sense — that being a clock with a constant rate of error — the high-quality quartz movement deserves the highest rating that a quartz movement can have.

The box itself is made from fine grade beechwood with a mahogany finish and 18 karats gold flashing on all brass fixtures. The clock is encased in a brass bezel.

The clock has a 12-hour Roman numeral dial with sweep second hand. Guaranteed accuracy is less than 1second per day error.



CMS

### SPECIFICATIONS

*Battery: IEC R6+ (AA)*

*Quartz Frequency: 32.768 KHz*

*Operation Voltage: 1.2V - 1.7V*

*Time Keeping Accuracy: Din 8325*

*Operating Temperature Range: -5°C +50°C*

*Battery life: 2 years*

### FEATURES

*BOX DIMENSIONS: 200 x 200 x 85mm*

*DIAL: 110mm*

*CASE FINISH: Polished brass*

*WARRANTY: 5 years*





# MINOR 72 SERIES

With a base of 72mm The Minor 72 is the smallest instrument produced by Autonautic. The range comprises of four instruments; clock, barometer, thermometer and hygrometer. Each is available in four styles; white dial with either gold plate, chrome and matt black or a black dial with chrome finish - this gives sixteen instruments in total. These instruments are ideal for smaller craft where space is at a premium but it is still desirable to carry a full set of meteorological instruments and would also make an attractive addition to any caravan or motorhome due to its 18-carat gold finish. This range of instruments are also suitable for inclusion in custom made panels or weather stations.



QUARTZ CLOCK

R72D



BAROMETER

B72D



THERMOMETER

T72D



HYGROMETER

H72D

## DIMENSIONS

BASE: 72mm

DIAL: 50mm

TOP HEIGHT: 39mm

COLOUR: Gold

# MINOR 72 SERIES

With a base of 72mm the Minor 72 is the smallest instrument produced by Autonautic. The range comprises of four instruments; clock, barometer, thermometer and hygrometer. Each is available in four styles; white dial with either gold plate, chrome and matt black or a black dial with chrome finish - this gives sixteen instruments in total.

These instruments are ideal for smaller craft where space is at a premium but it is still desirable to carry a full set of meteorological instruments and would also make an attractive addition to any caravan or motorhome. This range of instruments are also suitable for inclusion in custom made panels or weather stations.



QUARTZ CLOCK

R72C



BAROMETER

B72C



THERMOMETER

T72C



HYGROMETER

H72C

## DIMENSIONS

BASE: 72mm

DIAL: 50mm

TOP HEIGHT: 39mm

COLOUR: Chromed



ISO  
9001

# MINOR 72 SERIES

With a base of 72mm the Minor 72 is the smallest instrument produced by Autonatic. The range comprises of four instruments; clock, barometer, thermometer and hygrometer. Each is available in four styles; white dial with either gold plate, chrome and matt black or a black dial with chrome finish - this gives sixteen instruments in total.

These instruments are ideal for smaller craft where space is at a premium but it is still desirable to carry a full set of meteorological instruments and would also make an attractive addition to any caravan or motorhome. This range of instruments are also suitable for inclusion in custom made panels or weather stations.



QUARTZ CLOCK

R72N



BAROMETER

B72N



THERMOMETER

T72N



HYGROMETER

H72N

## DIMENSIONS

BASE: 72mm

DIAL: 50mm

TOP HEIGHT: 39mm

COLOUR: Black

# MINOR 72 SERIES

With a base of 72mm the Minor 72 is the smallest instrument produced by Autonatic. The range comprises of four instruments; clock, barometer, thermometer and hygrometer. Each is available in four styles; white dial with either gold plate, chrome and matt black or a black dial with chrome finish - this gives sixteen instruments in total.

These instruments are ideal for smaller craft where space is at a premium but it is still desirable to carry a full set of meteorological instruments and would also make an attractive addition to any caravan or motorhome. This range of instruments are also suitable for inclusion in custom made panels or weather stations.



QUARTZ CLOCK  
RE72C



BAROMETER  
BE72C



THERMOMETER  
TE72C



HYGROMETER  
HE72C

## DIMENSIONS

BASE: 72mm

DIAL: 50mm

TOP HEIGHT: 39mm

COLOUR: Chromed





# ATLANTIC 95 SERIES

The Atlantic 95 range of instruments have a base diameter of 95mm making them slightly larger than the Minor 72 instruments. The range comprises of three instruments: clock, barometer and comfortmeter (a combination of thermometer & hygrometer).

Each is available in three finishes styles; gold plate, chrome or matt black - this gives twelve instruments in total. All models in this range have a white dial. This range of instruments are also suitable for inclusion in custom made panels or weather stations. Alternatively, we have a range of pre-assembled weather stations listed in our weather station section. These instruments would also make an attractive addition to any caravan or motorhome due to its 18-carat gold finish.



**QUARTZ CLOCK**  
R95D



**BAROMETER**  
B95D



**COMFORTMETER**  
TH95D



## EASY FIX SYSTEM

To ensure easy operation and installation, an easy fix system is supplied in our 95 & 120 range of instruments which allows access to the movements, battery replacement or adjustment without removal from the bulkhead.

## DIMENSIONS

BASE: 95mm

DIAL: 70mm

TOP HEIGHT: 35mm

COLOUR: Gold



# ATLANTIC 95 SERIES

The Atlantic 95 range of instruments have a base diameter of 95mm making them slightly larger than the Minor 72 instruments. The range comprises of three instruments: clock, barometer and comfortmeter (a combination of thermometer & hygrometer).

Each is available in three finishes styles; gold plate, chrome or matt black - this gives twelve instruments in total. All models in this range have a white dial. This range of instruments are also suitable for inclusion in custom made panels or weather stations. Alternatively, we have a range of pre-assembled weather stations listed in our weather station section. These instruments would also make an attractive addition to any caravan or motorhome due to its 18-carat gold finish.



**QUARTZ CLOCK**  
R95C



**BAROMETER**  
B95C



**COMFORTMETER**  
TH95C



## EASY FIX SYSTEM

To ensure easy operation and installation, an easy fix system is supplied in our 95 & 120 range of instruments which allows access to the movements, battery replacement or adjustment without removal from the bulkhead.

## DIMENSIONS

BASE: 95mm

DIAL: 70mm

TOP HEIGHT: 35mm

COLOUR: Chromed



# ATLANTIC 95 SERIES

The Atlantic 95 range of instruments have a base diameter of 95mm making them slightly larger than the Minor 72 instruments. The range comprises of three instruments: clock, barometer and comfortmeter (a combination of thermometer & hygrometer).

Each is available in three finishes styles; gold plate, chrome or matt black - this gives twelve instruments in total. All models in this range have a white dial. This range of instruments are also suitable for inclusion in custom made panels or weather stations. Alternatively, we have a range of pre-assembled weather stations listed in our weather station section. These instruments would also make an attractive addition to any caravan or motorhome due to its 18-carat gold finish.



**QUARTZ CLOCK**  
R95C



**BAROMETER**  
B95C



**COMFORTMETER**  
TH95C



## EASY FIX SYSTEM

To ensure easy operation and installation, an easy fix system is supplied in our 95 & 120 range of instruments which allows access to the movements, battery replacement or adjustment without removal from the bulkhead.

## DIMENSIONS

BASE: 95mm

DIAL: 70mm

TOP HEIGHT: 35mm

COLOUR: Black

# PACIFIC 120 SERIES

The Pacific 120 is a mid-range size of instruments suitable for leisure craft and small commercial vessels. The range comprises of four instruments; clock, barometer, clinometer and confortmeter (combination of thermometer and hygrometer).

This range of instruments are also suitable for inclusion in custom made panels or weather stations. Alternatively, we have a range of pre-assembled weather stations listed in our weather station section. These instruments would also make an attractive addition to any caravan or motorhome due to its 18-carat gold finish.



QUARTZ CLOCK  
B120D-B



QUARTZ CLOCK  
B120D-A



QUARTZ CLOCK  
R120D-A.1



BAROMETER  
B120D



COMFORTMETER  
TH120D



CLINOMETER  
CL120D



## EASY FIX SYSTEM

To ensure easy operation and installation, an easy fix system is supplied in our 95 & 120 range of instruments which allows access to the movements, battery replacement or adjustment without removal from the bulkhead.

## DIMENSIONS

BASE: 120mm

DIAL: 110mm

TOP HEIGHT: 35mm

COLOUR: Gold



ISO  
9001

# PACIFIC 120 SERIES

The Pacific 120 is a mid-range size of instruments suitable for leisure craft and small commercial vessels. The range comprises of four instruments; clock, barometer, clinometer and confortmeter (combination of thermometer and hygrometer).

This range of instruments are also suitable for inclusion in custom made panels or weather stations. Alternatively, we have a range of pre-assembled weather stations listed in our weather station section. These instruments would also make an attractive addition to any caravan or motorhome due to its 18-carat gold finish.



**QUARTZ CLOCK**  
R120C-R



**QUARTZ CLOCK**  
R120C-A



**QUARTZ CLOCK**  
R120C-A.1



**BAROMETER**  
B120C



**COMFORTMETER**  
TH120C



**CLINOMETER**  
CL120C



## EASY FIX SYSTEM

To ensure easy operation and installation, an easy fix system is supplied in our 95 & 120 range of instruments which allows access to the movements, battery replacement or adjustment without removal from the bulkhead.

## DIMENSIONS

BASE: 120mm

DIAL: 110mm

TOP HEIGHT: 35mm

COLOUR: Chromed



# PACIFIC 120 SERIES

The Pacific 120 is a mid-range size of instruments suitable for leisure craft and small commercial vessels. The range comprises of four instruments; clock, barometer, clinometer and confortmeter (combination of thermometer and hygrometer).

This range of instruments are also suitable for inclusion in custom made panels or weather stations. Alternatively, we have a range of pre-assembled weather stations listed in our weather station section. These instruments would also make an attractive addition to any caravan or motorhome due to its 18-carat gold finish.



**QUARTZ CLOCK**  
R120N-R



**QUARTZ CLOCK**  
R120N-A



**QUARTZ CLOCK**  
R120N-A.1



**BAROMETER**  
B120N



**COMFORTMETER**  
TH120N



**CLINOMETER**  
CL120N



## EASY FIX SYSTEM

To ensure easy operation and installation, an easy fix system is supplied in our 95 & 120 range of instruments which allows access to the movements, battery replacement or adjustment without removal from the bulkhead.

## DIMENSIONS

BASE: 120mm

DIAL: 110mm

TOP HEIGHT: 35mm

COLOUR: Black





# INDIC 175 SERIES

The INDIC 175 SERIES is our large range of instruments suitable for pleasure craft and small commercial vessels. The brass binnacles have been "Flash" plated with 18 carat gold using an advanced brass cases plating technology that makes our instrument cases maintenance free. They are highly resistant to salt spray and will not rust or darken in marine environments, so the appearance of the brass will always remain the same, even if it is exposed to the marine environment for a long time.

To ensure easy operation and installation, One fixing ring is supplied in our INDIC series. This system allows access to the movements, battery replacement, or adjustment without removal from the bulkhead.



QUARTZ CLOCK

R175D



BAROMETER

B175D



COMFORTMETER

TH175D



CLINOMETER

CL175D

## DIMENSIONS

BASE: 175mm

DIAL: 150mm

TOP HEIGHT: 40mm

COLOUR: Gold

# INDIC 175 SERIES

The INDIC 175 SERIES is our large range of instruments suitable for pleasure craft and small commercial vessels. The brass binnacles have been "Flash" plated with 18 carat gold using an advanced brass cases plating technology that makes our instrument cases maintenance free.

To ensure easy operation and installation, One fixing ring is supplied in our INDIC series. This system allows access to the movements, battery replacement, or adjustment without removal from the bulkhead.



QUARTZ CLOCK

R175C



BAROMETER

B175C



COMFORTMETER

TH175C



CLINOMETER

CL175C

## DIMENSIONS

BASE: 175mm

DIAL: 150mm

TOP HEIGHT: 40mm

COLOUR: Chromed



ISO  
9001

# ATLANTIC 95 SERIES

## Weather Station

Experience the beauty of the sea with these stylish weather stations complete with clock, barometer and comfort meter, exudes class with its chrome and gold finish. With perfect dimensions of 95mm base and 70mm dial, this station adds a touch of maritime charm to any space.

Stay aware of temperature, air pressure and humidity for a comfortable climate.

A perfect gift for sailing enthusiasts or lovers of nautical decoration. Discover the enchantment of the sea with this beautiful weather station.



EG



EGC



## DIMENSIONS

CASE DIAM: 95 mm

DIAL: 75 mm

DIMENSIONS: 350 x 130mm



# PACIFIC 120 SERIES

## Weather Station

Are you looking for a 'touch of gold' for a nautical design? Then you are in the right place with this gold-plated weather station, made from a rich wooden plate, on which 3 brass ship instruments are mounted, all of which are finished with striking flash gold. It features an accurate quartz clock aneroid barometer and comformeter.



EMT



## DIMENSIONS

CASE DIAM: 120 mm

DIAL: 100 mm

DIMENSIONS: 443 x 185mm



**AUTONAUTIC**  
the compass specialist





# AUTONAUTIC

the compass specialist

Agricultura, 22. Local 6.

08320 EL MASNOU

BARCELONA

SPAIN

TEL. +34 935 40 99 49

[www.autonauticinstrumental.com](http://www.autonauticinstrumental.com)

[info@autonauticinstrumental.com](mailto:info@autonauticinstrumental.com)



Designed and manufactured in Barcelona  
for over 50 years

