



"X9"



X9-H



X9-DW



X9-DB



Fits Raymarine e9 and similar sized small - medium widescreen chart plotters and two standard sized instruments

Features:

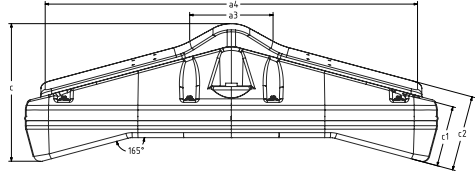
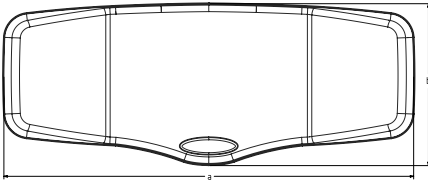
Innovative design allowing all helm Pods to be mounted to either 9.5" or 12" binnacle rails - X9-H, or directly to a flat surface - "deck mount", by way of a 290° swivel base that is available in white - X9-DW, or black - X9-DB finishes.

1. High quality stainless steel brackets - for watertight installation, supplied with tamper proof bolts and three internal rubber bushes to allow fitting to common rail sizes
2. Custom designed seal and fasteners, increases strength and prevents overtightening of the two halves of the Pod
3. Incorporated Goretex® vent to prevent build up of water vapour within the Pod
4. The deck base has internal built in brass spacers to prevent over compression of the plastic and aid security
5. Small internal and external indentations aid with installation and face cutting

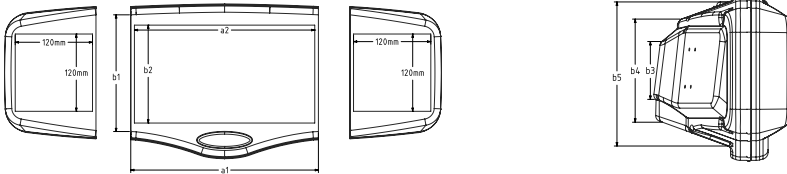


FEATURES

Pod Dimensions

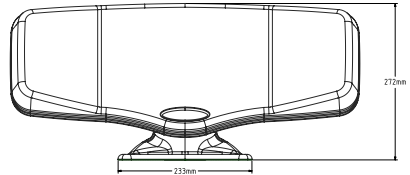
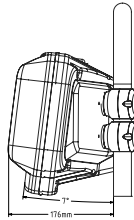
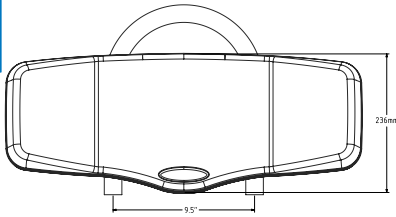


Pod Face Dimensions							
External Dimensions			Max Useable Plotter Face		Max Plotter Cut Out Area		
a	b	c	a1	b1	a2	b2	
605	239	200	291	184	280	152	
Pod Back Dimensions							
Width		Height			Depth		
a3	a4	b3	b4	b5	c1	c2	
122	548	85	151	211	86	108	

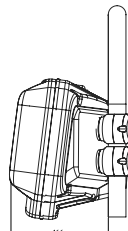
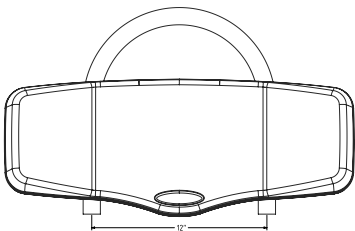


SPECIFICATIONS

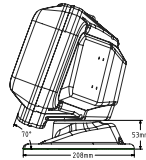
As Installed Pod Dimensions



9.5" Binnacle Rail



12" Binnacle Rail



Deck Mount

Pod Plotter Compatibility

Brand	Model Number
B&G	H3000 FFD/H3000 GFD/GPD 20/20HV/30/30HV Zeus Touch 7
Furuno	Navpilot 700 GP33/37 SC50/110 GP1870/F FCV-627/GP-1670/F
Garmin	GPSMAP620 GPSMAP451/S/551/S/556/S GPSMAP750/S/721/751
Humminbird	800/900 Series
Lowrance	HDS-5/5x/5m/5m Gen2 Elite-7m HDS-7/7M/7m Gen-2 Touch HDS-9m Gen2 Touch
NASA Marine	Target Navtex Pro Plus V2
Nexus	XL30 NX2 MultiXL/XL20 Multi Control
Raymarine	a75/77/78 e7/D A50/D ST70 Plus A57D A70/70D A60/65 e/c95/97
Seiwa	FT70 SW501i/501e SW701x/cx
Simrad	NSS7
Techmarine	S50.02 - S55.02
Standard Horizon	CP/F 190i/F/390i CP/F390i CPN700i
Vesper Marine	AIS watchmate 650/750/850 Watchmate Vision
Techmarine	T50.05 - T55.05/7x TM5x
The MarinePod X9 is compatible with the above plotters and two standard marine instruments - up to an individual size of 120mm x 120mm	

NOTE: If your brand and model of electronics is not listed please call prior to ordering, or visit www.marinepod.co.uk for further information. MarinePod operates a continuous product development program and reserves the right to alter specifications without prior notice.

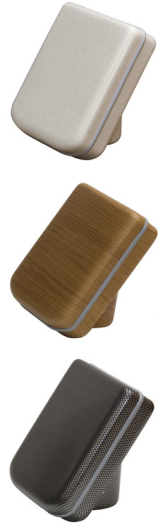


MarinePod®

MarinePod specialises in the design and manufacture of protective housings for marine electronics - "Pods". It offers the marine industry a unique approach to the common problems faced when trying to install the latest navigation or instrumentation displays on to a vessel.

Custom Design

In addition to the standard range of Pods, MarinePod can manufacture Pods with custom finishes. Choose a finish that fully complements your vessel and style. Available at an additional cost. Please call for further information.



Made in the UK



is a registered trademark of



Contact us for further information:

Tel: +44 (0) 1494 532 335

Fax: +44 (0) 1494 532 355

Email: sales@marinepod.co.uk

Web: www.marinepod.co.uk