



Sanitation Pump

BP0527 / BP0535

Please read carefully before installation and use.

To the Fitter: Check that the product is suitable for the intended application, follow installation instructions and ensure operating instructions are passed on to the user.

To the User: Read the following instructions carefully.

Application:

This pump is designed to pump water.

Output capacity depends on installation conditions and pumping rate. Users should be aware that capacity may not be sufficient to cope with rapid influx of water.

If it is intended for use for any other purpose or with any other liquid, it is the users' responsibility to ensure that the pump is suitable for the intended use and, in particular, that the materials are fully compatible with the liquids to be used. With all applications, it is important that a system of safe working practice is applied to installation, use and maintenance.

Mounting Instructions

BP0527 (Bulkhead)

1. Select a suitable position where the pump can be operated efficiently and comfortably with the full movement of the handle obtainable. The top cover should be readily accessible in case of choking. The pump will work in any part of the boat and the flow direction can be changed, as overleaf, to increase the options available.

2. Mark off and drill 4 holes for the mounting bolts.
3. Complete the installation using 6 mm (¼") bolts.
4. Attach 38 mm (1½") hose to the inlet and outlet branches making sure that an airtight seal is made.
5. The suction pipe should be arranged so that it will not suck against any flat surface. A Whale strumbox is available for this purpose and to help clear the last drop of water.
6. The outlet pipe should be terminated at a skin fitting well above the water line preferably in the transom. It is considered advisable that a sea cock is incorporated in the line to eliminate the risk of syphoning back.
7. Test the installation for air leaks, correct priming and discharge.

Mounting Instructions

BP0535 (Underdeck)

1. As instructions for BP0527.
2. Mark off and drill the large hole and 8 small holes. (If the handle seal is not required drill 4 holes for the mounting bolts and cut a slot to clear the rocker arm).
3. Complete the installation using the eight 6 mm (¼") countersunk screws. Fit 2 screws through seal, bulkhead and pump. Fit 4 screws through seal and bulkhead, 2 screws through bulkhead and pump. The rubber seal should fit lightly over the pump rocker arm.
4. Attach 38 mm (1½") hose to the inlet and outlet branches making sure that an airtight seal is made.

To change the direction of flow (All models)

Remove the 8 assembly screws, and reassemble the pump as required. The

valves should not be removed from the body. The outlet should not be put in line with the pump.

To change the rubber parts

1. First remove the top cover, the body and the rocker arm nut.
 2. The old diaphragm can now be replaced and the rocker arm nut put on finger tight. (Both diaphragm plates should have the rounded edge towards the diaphragm).
 3. Remove the old inlet valve and plate and replace with new.
 4. Unscrew the 4 screws around the outlet branch, remove the old valve then replace with new, securing it with the 4 new screws provided.
 5. Reassemble the body on to the rear cover and fully tighten the 8 assembly screws and rocker arm nut.
 6. Remove the old seal from the top cover, replace with new and screw firmly on to the body.
- Note: The outlet valve can be replaced without removing the pump body.

If the pump fails to prime or chokes, check for:

1. Air leaks or blockages in the inlet hose and its connection to the pump.
2. A torn diaphragm.
3. Dirt under the valves or distorted valves.
4. Collapse of the inlet hose during the suction stroke.

Spare parts

A range of spare parts are available in kit and assemble form and are available from your chandler or by return post direct from our factory.

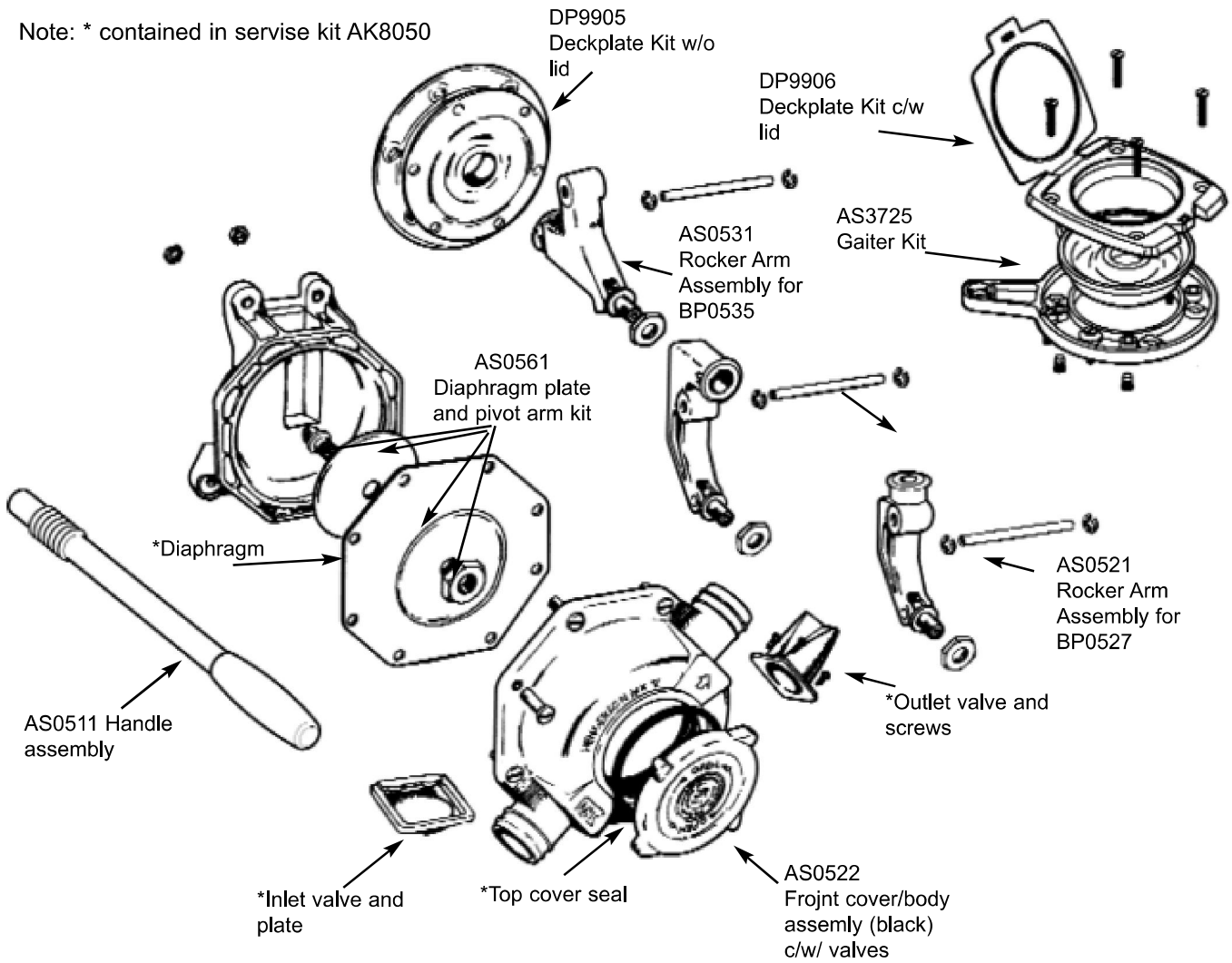
Extra equipment available:

- Watertight seal for under -deck model (DP9906)
- Skin fitting for 1½" (38 mm) (SF5425)
- Top (SB5865)& side (SB4222) entry strum-box/bilge strainer
- 2 way diverter valve 1½" (38 mm) (DV5606)
- Right angle bend
- 90° elbow 1½" (38 mm) (EB3488)
- "Y" piece (YP6114)
- In-line non-return valve(LV1215)

Warranty

This Whale product is covered by 5 years warranty. Please see the enclosed document for details of our statement of limited warranty.

Note: * contained in servise kit AK8050



Munster Simms Engineering Ltd

2 Enterprise Road, Bangor, N. Ireland Tel: +44 (0)28 9127 0531 Fax: +44 (0)28 9146 6421

Web: www.whalepumps.com Email: info@whalepumps.com

Ref No: sr_404.66_v7_1014_db