

2023

Recommended marine retail price list.

DKK incl 25% VAT

ULTRASONIC
WIND SENSOR

LCJ CAPTEURS

2

BaroPlug / WindyPlug
(Plug & Play NMEA2000®)

3

CV7
with options

4

CV7-V
with options

5

CV7-C
with options

6

CV7SF2
with options

7

Options and
accessories for CV7

8

Softwares
for PC

9

CV3F
with options

10

Options and
accessories for CV3F

11

Rotating mast
NMEA2000®

12

Rotating mast
Raymarine® and B&G®

13

Pack
SEMAPHORE

ULTRASONIC
WIND SENSOR
LCJ CAPTEURS

Another way
to read the wind

ScanMarine DK ApS
Egensevej 25
2770 Kastrup

Danmark, Tel.: +45 81 94 98 20, CVR: DK 35 64 95 65

“Plug and Play” NMEA2000® devices



BAROPLUG

12 V

Temporarily unavailable
(contact us for lead times)

The BaroPlug is a barometer for NMEA2000® systems. It features a MICRO male plug to connect directly to the NMEA2000® backbone. Install this "Plug and Play" device on the NMEA2000® network and immediately get the air pressure readout on a display that features this data !



1610,-

WINDYPLUG

12 V

NMEA2000® interface for wind sensor with integrated barometer. This device has the same design as the BaroPlug and is compatible with each NMEA2000® V2 and V3 equipment. It features a MICRO C male plug to connect directly to the NMEA2000® bus. Just connect this "Plug and Play" device to the backbone of the NMEA2000® installation.



2196,-



CV7

Ultrasonic wind sensor

310mm aluminum oblique arm, Ø 12mm

25m cable length

NMEA0183® (standard)

9 to
33 V

5950,-

CV7-STBG

12 V

Ultrasonic wind sensor, standard mounting (oblique pole), 25m cable length, STBGv5 universal interface for compatibility with Raymarine® and B&G® instruments all generations.

7125,-

CV7-WINDYPLUG

12 V

Ultrasonic wind sensor, standard mounting (oblique pole), 25m cable length, junction interface for NMEA2000® compatibility, barometer included.

7715,-

CV7-BARO3

12 V

Ultrasonic wind sensor, standard mounting (oblique pole), 25m cable length, barometer junction box, NMEA0183®.

7715,-

CV7-SIL

12 V

Ultrasonic wind sensor, standard mounting (oblique pole), 25m cable length, compatibility: **SILVA**, NEXUS NX2, Furuno FI30.

5950,-



CV7-V

Ultrasonic wind sensor*

310mm aluminum vertical arm, Ø 16mm

25m cable length

NMEA0183® (standard)

9 to
33 V

6645,-

CV7-V-STBG

12 V

Ultrasonic wind sensor, vertical mounting, 25m cable length, STBGv5 universal interface for compatibility with Raymarine® and B&G® instruments all generations.

8045,-

CV7-V-WINDYPLUG

12 V

Ultrasonic wind sensor, vertical mounting, 25m cable length, junction interface for NMEA2000® compatibility, barometer included.

8045,-

CV7-V-BARO3

12 V

Ultrasonic wind sensor, vertical mounting, 25m cable length, barometer junction box, NMEA0183®.

8045,-

*Also available in black color, please contact us.



CV7-C

9 to
33 V

High speed ultrasonic wind sensor 4Hz

700mm carbon vertical arm, Ø 16mm

25m cable length

NMEA0183® (standard)

7770,-

CV7-C-STBG

12 V

High speed ultrasonic wind sensor with STBG interface, long vertical carbon arm (700 mm), 25m cable length, STBGv5 option for compability with Raymarine® and B&G® instruments all generations.

9625,-

CV7-C-WINDYPLUG

12 V

High speed ultrasonic wind sensor with WindyPlug option, long vertical carbon arm (700 mm), 25m cable length, junction interface for NMEA2000® compatibility, barometer included.

9225,-



CV7-HR-OEM

12 V

High speed ultrasonic wind sensor, 120Hz measurement, transmission baud rate 38400, sensor head, 50cm twisted wire, adapters for oblique and vertical mounting, no carbon pole, no cable, no mounting accessories.

7125,-



CV7SF2

Wireless ultrasonic wind sensor

Photovoltaic cell, receiver box (5 to 15V power supply) and LifePO4 battery

Aluminium vertical arm 310mm, Ø 16mm

NMEA0183® (standard)



7715,-

CV7SF2-WINDYPLUG



Wireless ultrasonic wind sensor powered by photovoltaic cell and LifePO4 3V battery, data refresh once per second day and night, receiver box (5 to 15V power supply), vertical mounting, junction interface for NMEA2000® compatibility, integrated barometer.

8920,-

CV7SF2-USB



Wireless ultrasonic wind sensor powered by photovoltaic cell and LifePO4 3V battery, data refresh once per second day and night, receiver box (power supply via USB), USB interface, vertical mounting, NMEA0183®.

8435,-



Adapt-1" CV7

1"x14 standard mounting adapter for CV7 - Ø 16 mm

540,-



Option Windyplug

NMEA2000® interface for CV7 (and CV3F as well)

2200,-



Vertical support

Vertical support for horizontal surface mounting. Glomex® RA106BRACKET and RA106BRACKINOX are compatible (not supplied)

345,-



Option STBG

Universal interface for CV7 compatibility with Raymarine® and B&G® instruments

2465,-



Option Baro3

12V junction box with barometer sensor for CV7 (and CV3F as well)

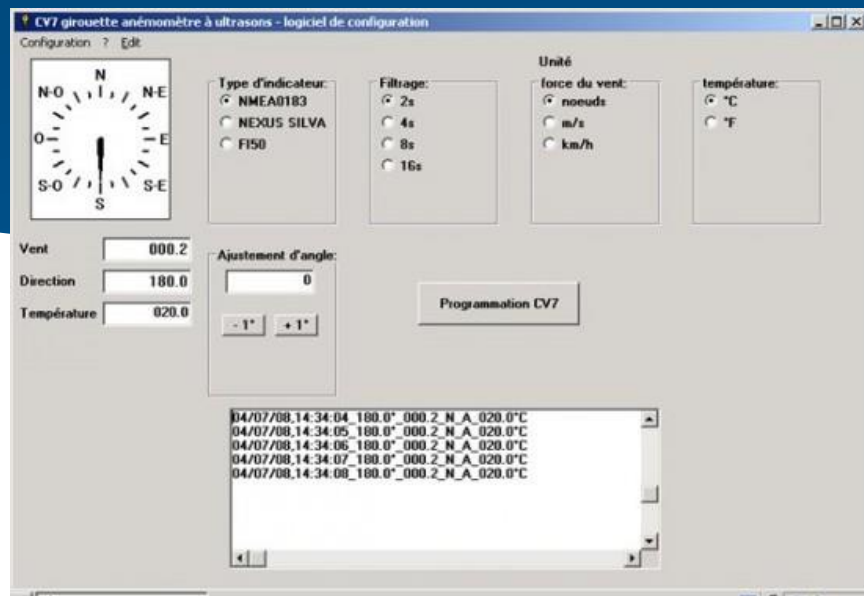
2200,-



Option USB

USB junction box for CV7, power supply via USB port, NMEA0183® virtual com port (Windows driver)

1740,-

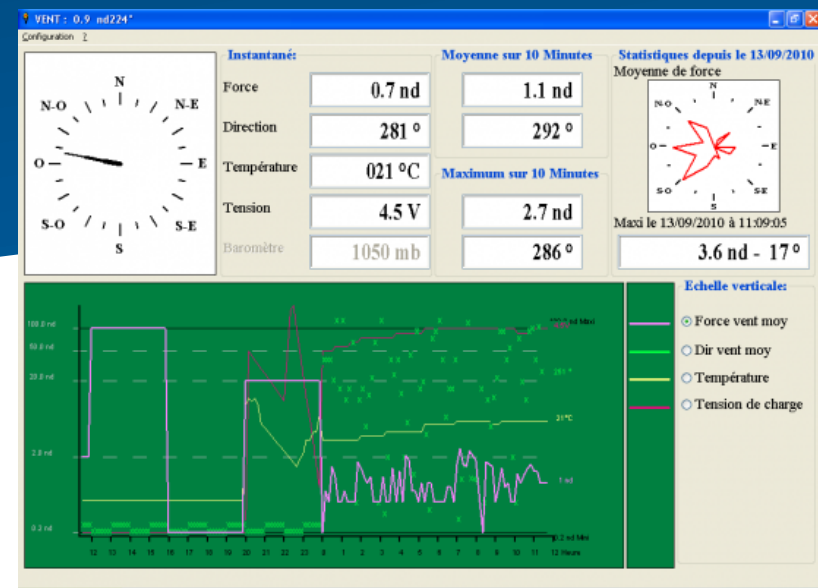


CV7-Config

CV7 configuration software for Windows.
Data output settings, smoothing, wind speed units.

Free software

(upon request by e-mail)



StatMETEO

Software for recording and displaying wind and air pressure data for LCJ Capteurs ultrasonic wind sensors. Windows compatible. Multi-language software.

1350,-



CV3F

Ultrasonic wind sensor

Aluminium vertical arm 310mm, Ø 20 mm

25m coaxial cable and junction box

NMEA0183® (standard)

12 V

5960,-

CV3F-BARO3

12 V

CV3F ultrasonic wind sensor, vertical mounting, 25m coaxial cable, mounting parts, 12V barometer junction box, NMEA0183®.

7060,-

CV3F-AL 24 V

12 V

Ultrasonic wind sensor, vertical mounting, , 25m coaxial cable, mounting parts, 24 V DC junction box, NMEA0183®.

6860,-

CV3F-WINDYPLUG

12 V

Ultrasonic wind sensor, vertical mounting, 25m coaxial cable, mounting parts, junction interface for NMEA2000® compatibility, integrated barometer.

7490,-



Adapt-1" CV3F

1"x14 standard mounting adapter for CV3F - Ø 20 mm

540,-



Alim CV3F

12 V junction box and NMEA0183® interface for CV3F

1125,-



Option Windyplug

NMEA2000® interface for CV3F (and CV7 as well)

2200,-



Alim CV3F-AL

24 V junction box and NMEA0183® interface for CV3F

2200,-



Option Baro3

12V junction box with barometer sensor for CV3F (and CV7 as well)

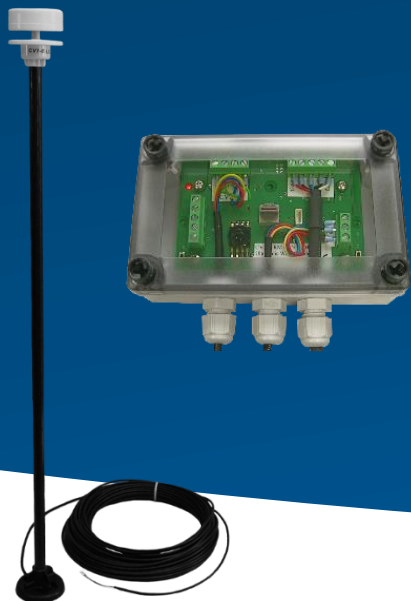
2200,-



Coax 25 m

RG58 C/U coaxial cable for CV3F

775,-



RM-CANBUS



12 V

NMEA2000® interface for rotating mast

RM-CANBUS box associated with CV7 range

Integrated barometer

Compatibility with Honeywell® position sensor - SMART 100 and 180 degrees (not supplied)

6740,-

CV7-RM

12 V

RM interface pack and CV7 ultrasonic wind sensor with oblique arm, NMEA2000® compatible. Integrated barometer. For Honeywell® SMART100 / SMART180 position sensor (not supplied).

12540,-

CV7-V-RM

12 V

RM interface pack and CV7 ultrasonic wind sensor with vertical arm, NMEA2000® compatible. Integrated barometer. For Honeywell® SMART100 / SMART180 position sensor (not supplied).

13275,-

CV7-C-RM

12 V

RM interface pack and CV7 ultrasonic wind sensor with long carbon vertical arm, NMEA2000® compatible. Integrated barometer. For Honeywell® SMART100 / SMART180 position sensor (not supplied).

14400,-



RM-STBG



12 V

STBG interface for rotating mast

RM-STBG box associated with CV7 range

For all brands of displays with a 5 or 6 wire masthead input

Compatible with Honeywell® SMART position sensor only 100 degrees (not supplied)

3150,-

CV7-RM-STBG



RM-STBG interface pack and CV7 ultrasonic wind sensor with oblique arm, for all brands of displays with a 5 or 6 wire masthead input, compatible with the Honeywell® SMART100 position sensor (not supplied).

9110,-

CV7-V-RM-STBG



RM-STBG interface pack and CV7 ultrasonic wind sensor with vertical arm, for all brands of displays with a 5 or 6 wire masthead input, compatible with the Honeywell® SMART100 position sensor (not supplied).

9785,-

CV7-C-RM-STBG



RM-STBG interface pack and CV7 ultrasonic wind sensor with long carbon vertical arm, for all brands of displays with a 5 or 6 wire masthead input, compatible with the Honeywell® SMART100 position sensor (not supplied).

10920,-



PACK SEMAPHORE

24 V

Complete instrument package for semaphores and harbor master's offices:

- CV7-V ultrasonic wind vane-anemometer with vertical arm, 25m cable length (other optional cable lengths), mounting bracket
- 220 V / 24 V DC power supply
- Barometer option for CV7-V with power supply and isolated data input(24 V DC)
- 7" touch screen MMI-7070 24 V DC

13460,-



Another way
to read the wind

2-year warranty (excluding MMI display – see page 13)

Non contractual pictures

Pricing subject to changes without notice

Pricing does not include taxes and shipping costs

ScanMarine DK ApS

Egensevej 25

2770 Kastrup

Danmark, Tel.: +45 81 94 98 20, CVR: DK 35 64 95 65