

Shakespeare®

GLOBAL MARITIME SOLUTIONS

Commercial Antennas



PHASE III

High end deck hardware meets performance

Our line of Phase III® marine antennas started with the idea to improve the best antennas. Through close collaboration with professionals in the civil and military markets, we were able to produce the finest, highest performing marine antennas ever built. Backed by our 8 year warranty, these antennas are built to last in the harshest marine environments. To maximize the performance of your marine radio, choose our Phase III® products.

Ethafoam Spacer System

Isolates the radiators from vibration and moisture for long, dependable service

Silver-Plated Elements

All Phase III antennas have silver-plated elements for maximum electrical efficiency that actually improves with age

Quality Conductors

Stranded, high-quality tinned copper inner conductor maximizes signal strength

12-Sided Facet

Indexes and prevents the antenna from rotating during installation

Shakespeare Fiberglass Radome

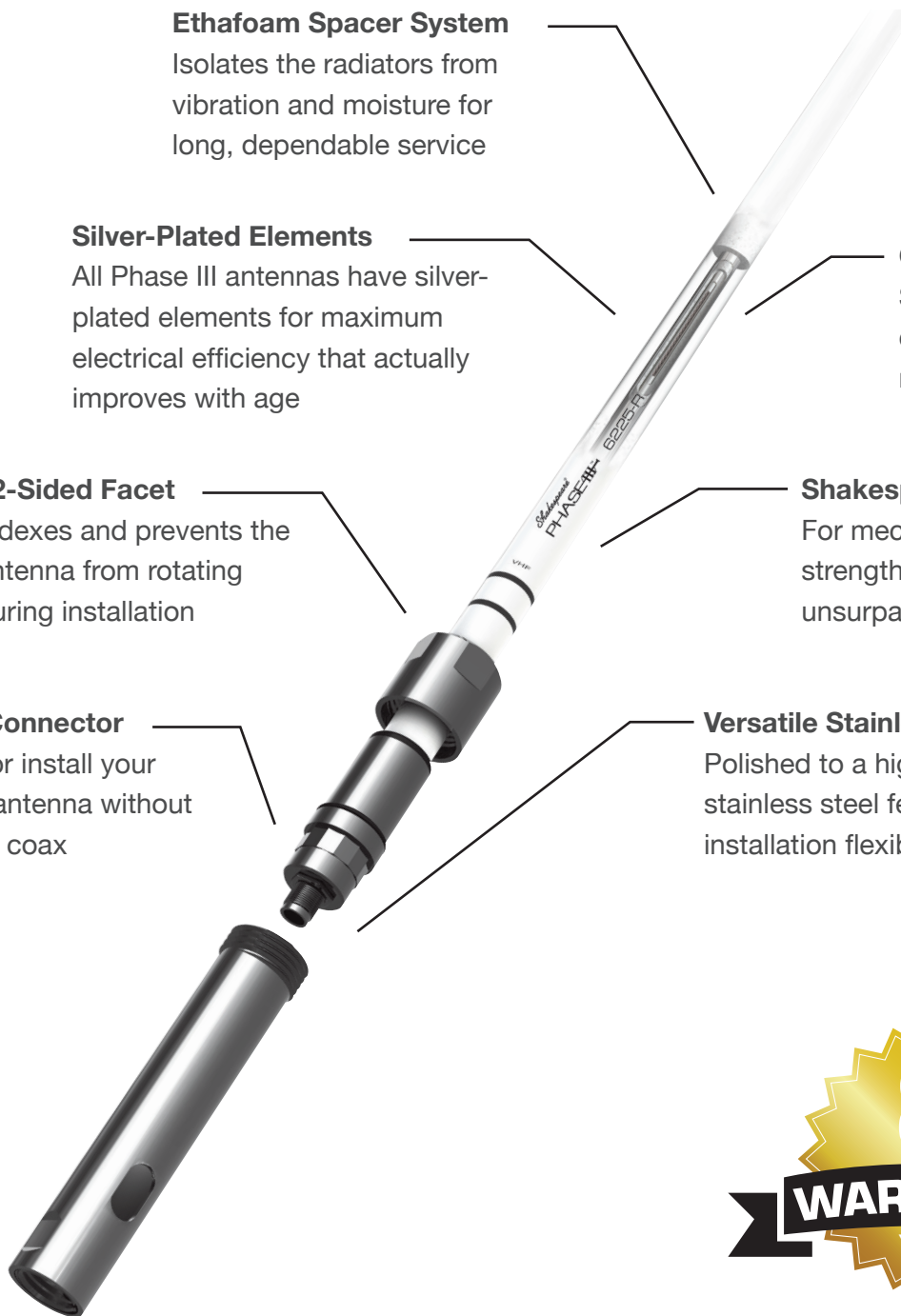
For mechanical support, our high-strength fiberglass radomes are unsurpassed in the industry

SO-239 Connector

Remove or install your Phase III antenna without re-routing coax

Versatile Stainless Steel Ferrule

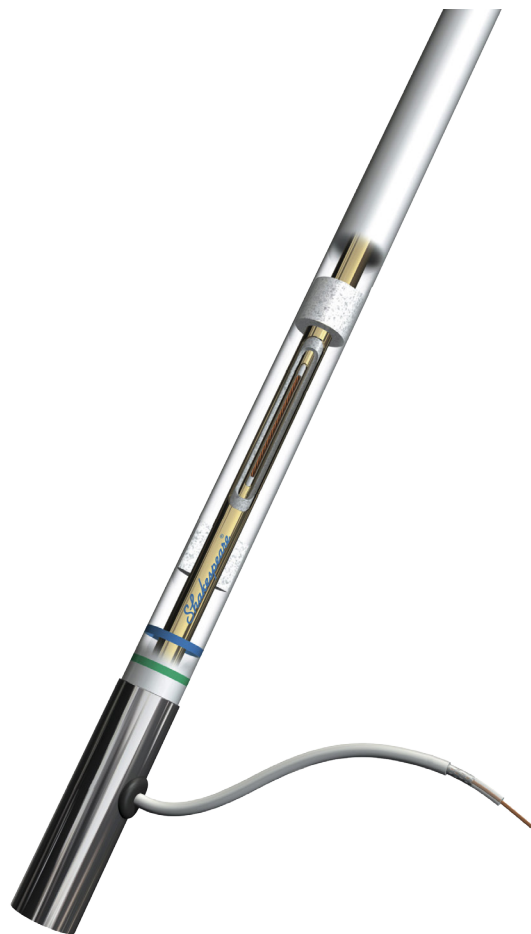
Polished to a high luster, our versatile stainless steel ferrule assembly provides installation flexibility



GALAXY®

The industry standard for beauty and performance

- Brass elements
- Stainless steel fittings
- Thick radome & ethafoam spacers
- High efficiency, low-loss cable
- High-gloss, non-yellowing protective finish



Classic

Basic communication, navigation & entertainment

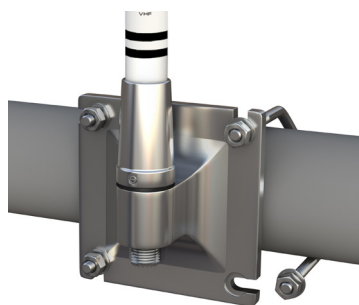
- Coaxial conductors
- Chrome-plated brass & nylon fittings



NEW 6500-WB

Phase III 4', 3dB, 145-165MHz, Broad Band VHF Antenna
 Built for maximum performance, this 4' broad band antenna is designed to endure the harsh environment and communication requirements in commercial, law enforcement and disaster management applications. Whether you install it on a vessel, base station, or a stationary platform, this antenna provides a host of mounting options to fit your need. No tuning or ground plane required. Cable not included.

- **Stainless steel mounting bracket:** Corrosion resistant even in marine environments and 3 mounting options
- **Patent pending mount design:** Install the U-bolts without removing hardware - no more lost hardware
- **Detachable antenna:** Handle mounting bracket easily without the weight of the antenna. Also, mount it on a large variety of Shakespeare® mounts with a 1"-14 thread¹
- **IP 67², high wind rating, wide temperature range, polyurethane coating:** Built to last in rain, sun, ice, dust, water splashes, even in the harshest marine environments



Install the mounting bracket without losing hardware.



Technical Specifications

Frequency	156-162 MHz, VSWR < 1.5:1 145-165 MHz, VSWR < 2:1	
Nominal Impedance	50ohm	
Input Power Rating	100 Watts, continuous	
Gain	3dB	
Polarization (Pattern)	Vertical (Omnidirectional)	
Connector	UHF Female (SO-239 type)	
Recommended Cable	RG-8/U, RG-213/U or similar	
DC Ground	Yes – It will read a short on a continuity test	
Height / Weight	4' (1.2m)	2.5 lbs (1.1 Kg)
Wind Rating	125 mph (55m/s)	
Water/Dust Rating	IP67 ²	
Temperature Range	-67° F to 160° F (-55° C to 71° C)	
Finish	White, high-gloss, non-yellowing polyurethane	
RoHS Compliant	Yes	
Mounting	Stainless steel mounting bracket with U-bolts, for mounting on mast, rails, or screwed directly onto bulkheads	

¹Requires a Shakespeare 4006 double female ferrule (not included).

²When installed as instructed.



AIS

Part #	Brand	Height	Gain	Mount Type	Pwr	Connection	Ship Length	Suggested Mount	Matching Ant
6396-AIS-R	Phase III	4 ft.	3dB	Mast, 1"-14	50w	SO-239 Connector	59 (148.0 cm)	4187-HD or 4715	See 6400-R
5396-AIS	Galaxy	4 ft.	3dB	1"-14	50w	20' RG-8/X low-loss cable w/ PL-259	55 (139.0 cm)	4187 or 4187-HD	See 5400-XT
396-1-AIS	Classic	4 ft.	3dB	Mast	50w	SO-239 Connector	55 (138.0 cm)	U-Bolts incl. or 4715	
AIS-COM	V-Tronix	5.5 ft.	3dB	Mast	100W	3' RG-213 Coax w/ N connector	67x5.5x2.75 (170x14x7cm)	MDM 207 clamp incl.	
5225-XT-AIS	Galaxy	8 ft.	6dB	1"-14	100W	20' of RG-8/X low-loss cable	99 (251.0 cm)	4187 or 4187-HD	See 5225-XT

VHF

Part #	Brand	Height	Gain	Mount Type	Pwr	Connection	Ship Length	Suggested Mount	Matching Ant
6400-R	Phase III	4 ft.	3dB	Mast, 1"-14	150w	SO-239 Connector	58 (147.0 cm)	4187-HD or 4715	See 6396-AIS-R
5400-XT	Galaxy	4 ft.	3dB	1"-14	50w	20' RG-8/X low-loss cable w/ PL-259	55 (139.0 cm)	4187 or 4187-HD	See 5396-AIS
MD-70	V-Tronix	5 ft.	3dB	Mast, Rail	50w	3' RG-213 Coax w/ N connector	67x5.5x2.75 (170x14x7cm)	Aluminium bracket & U-Bolts included	
MD-7A	V-Tronix	5 ft.	3dB	Mast	100w	3' RG-213 Coax w/ N connector	67x5.5x2.75 (170x14x7cm)	MDM 207 clamp included	
6225-R	Phase III	8 ft.	6dB	Mast, 1"-14	150w	SO-239 Connector	106 (268.0 cm)	4187-HD or 4715	
5225-XT	Galaxy	8 ft.	6dB	1"-14"	100w	20' RG-8/X low-loss cable w/ PL-259	99 (251.0 cm)	4187 or 4187-HD	See 5225-XT-AIS
MD-15	V-Tronix	9 ft.	3dB	Mast	100w	3' RG-213 Coax w/ N connector	108x5.5x2.75 (275x14x7cm)		
6018-R	Phase III	18 ft. (2pc)	9dB	Deck, Side	150w	SO-239 Connector	117 (296.0 cm)	409-R or 410-R	See 6390-R
5018	Galaxy	17.5 ft. (2pc)	9dB	Deck, Side	150w	20' RG-8/X low-loss cable w/ PL-259	109 (275.0 cm)	409-R or 410-R	See 5390
4018-M	Classic	19 ft.	9dB	Mast	50w	SO-239 Connector	172 (435.0 cm)	U-Bolts included	
476	Classic	21 ft.	10dB	Mast, Wall	350w	SO-239 Connector	260 (660.0 cm)	483 or 484	
5208-3	Classic	23 ft. (3pc)	9dB	Deck, Side	50w	20' of RG-58 coax cable w/ PL-259	110 (277.0 cm)	409-R or 410-R	
5309-R	Galaxy	23 ft. (2pc)	9dB	Deck, Side	150w	20' RG-8/X low-loss cable w/ PL-259	177 (448.0 cm)	409-R or 410-R	See 5310-R

HF/SSB

Part #	Brand	Height	Gain	Mount Type	Pwr	Connection	Ship Length	Suggested Mount	Matching Ant
6390-R	Phase III	18 ft. (2pc)	N/A	Deck, Side	1000w	Side-feed termination	117 (296.0 cm)	409-R or 410-R	See 6018-R
5390	Galaxy	17.5 ft. (2pc)	N/A	Deck, Side	1000w	Side-feed termination	109 (275.0 cm)	409-R or 410-R	See 5018
5310-R	Galaxy	23 ft. (2pc)	N/A	Deck, Side	1000w	Side-feed termination	178 (450.0 cm)	409-R or 410-R	See 5309-R
390	Classic	23 ft. (2pc)	N/A	Deck, Side	1000w	Side-feed termination	164 (415.0 cm)	409-R or 410-R	
390-1	Classic	23 ft. (2pc)	N/A	Deck	1000w	Side-feed termination	167 (424.0 cm)	Flange base included	
393	Classic	23 ft. (3pc)	N/A	Deck, Side	1000w	Side-feed termination	100 (252.0 cm)	409-R or 410-R	
5300	Classic	28 ft. (2pc)	N/A	Mast, Wall	1000w	Side-feed termination	205 (520.0 cm)	483 or 484	
222-B	Military	35 ft.	N/A	Deck	5000w	Side-feed termination	Freight only.	Flange base included	
229-B	Military	35 ft.	N/A	Deck, Floor	5000w	Side-feed termination	Freight only.	Requires fabricated base	

UHF

Part #	Brand	Height	Gain	Mount Type	Pwr	Connection	Ship Length	Suggested Mount	Matching Ant
US-3849	Galaxy	3.5 ft.	2-5dB	Mast, 1"-14"	125w	N connector	47 (119.0 cm)	4187-HD or 4715	

VHF Broadband

Part #	Freq	Height	Gain	Mount Type	Pwr	Connection	Ship Length	Suggested Mount	Brand
6500-WB	145-165 MHz	4 ft.	3dB	Mast, Rail, Wall, 1"-14	100w	SO-239 Connector	53x4.8x2.4 (134x12x6cm)	Included. 1"-14 requires 4006 & mount to pair	Phase III
1200-V	146-162MHz	4 ft.	3dB		100w	SO-239 Connector	50 (127 cm)	MDM70-11	V-Tronix
HS-2774-R	136-174MHz	6.5 ft.	4dB	Mast	125w	N connector	87 (219 cm)	4715	Galaxy
HS-2774-1-R	136-174MHz	6.5 ft.	4dB	1"-14	125w	20' RG-8/X low-loss cable w/ PL-259	87 (219.0 cm)	4187 or 4187-HD	Galaxy

Cellular/WiFi

Part #	Freq	Height	Gain	Mount Type	Pwr	Connection	Ship Length	Suggested Mount	Brand
5239	698-2700MHz Cellular/WiFi Worldband	9.25 in.	3-4dB	Mast, 1"-14	100w	N connector	10.25x4.25x4.25 (26x10.7x10.7cm)	4187-HD, 4710 or 4715	Galaxy

Cellular Boosters

Part #	Coverage	Carriers	Description
CA-VAT-10-R	670 sq. ft.	All major US based carriers	SuperHALO 4G cellular booster kit, supports 6-10 users, and auto gain adjust for easy installation.
CA-VAT	670 sq. ft.	All major US based carriers	Aura 2G & 3G cellular booster kit, supports 6-10 users.

Visit Shakespeare-Marine.com for more products to install your antenna.

Accessories



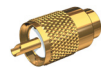
PL-258-G (Gold-Plated)
Barrel connector for PL-259 ended cables



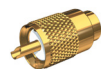
PL-258-L-G (Gold-Plated)
Bulkhead mountable barrel connector for PL-259 ended cables



PL-259-G (Gold-Plated)
PL-259 connector for RG-8/AU & RG-213 cable



PL-259-58-G (Gold-Plated)
PL-259 connector for RG-58 cable



PL-259-8X-G (Gold-Plated)
PL-259 connector for RG-8X cable



PL-258-CP-G (Gold-Plated)
Centerpin® PL-258 splice connector for RG-8X or RG-58/AU cables



PL-259-CP-G (Gold-Plated)
Centerpin® PL-259 connector for RG-8X or RG-58/AU cables



PL-258-CPB-G (Gold-Plated)
Centerpin® PL-258 splice connector (individually bagged)



PL-259-CPB-G (Gold-Plated)
Centerpin® PL-259 connector (individually bagged)



ART-3 Antenna (Radio Tester)
Tests antenna and radio Tx & Rx

Mounts



409-R (4-way Kit)
407 mount & 408-R upper bracket for 1", 1 1/8" & 1 1/2" dia. antennas



410-R (Swivel Kit)
81-S mount & 408-R upper bracket for 1", 1 1/8" & 1 1/2" dia. antennas



483 (Mast Clamp)
For 476 antenna



484 (Wall Clamp)
For 476 antenna



4006 (Extension Ferrule)
4 1/2" stainless steel, w/ female 1"-14 threads at both ends



4365 (Straight Mount)
4" high, 1"-14 thread stainless steel



4187 (Ratchet Mount)
Stainless steel, with handle



4187-HD (Ratchet Mount)
Extra heavy duty, stainless steel, with handle



4188 (Ratchet Rail Mount)
Stainless steel for 7/8" to 1 1/2" vertical, horizontal or slanted rails



4715 (MDM 207 for UK)
Fits 1" - 2" dia. antennas and masts



4191 (Stand Off Extension)
Stainless steel, adjustable 3-8"



4710 (Flange Mount)
1" high, heavy-duty, low profile 1"-14 thread, stainless steel

Extension Masts



4700 (Classic Extension Mast)
6", stainless steel (heavy duty)



4700-1 (Classic Extension Mast)
1', stainless steel (heavy duty)



4700-2 (Classic Extension Mast)
2', stainless steel (heavy duty)



5228 (Galaxy® Extension Mast)
8', 1 1/2" dia. w/ stainless steel ferrule (heavy duty)



5228-1 (Galaxy® Extension Mast)
1', 1" dia. w/ stainless steel ferrule (heavy duty)



5228-2 (Galaxy® Extension Mast)
2', 1" dia. w/ stainless steel ferrule (heavy duty)



5228-4 (Galaxy® Extension Mast)
4', 1 1/2" dia. w/ stainless steel ferrule (heavy duty)



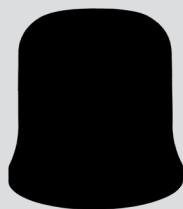
More Shakespeare Products

Didn't find what you are looking for? Visit Shakespeare-Marine.com for the complete line of marine connectivity and antenna products.

HDTV Antennas



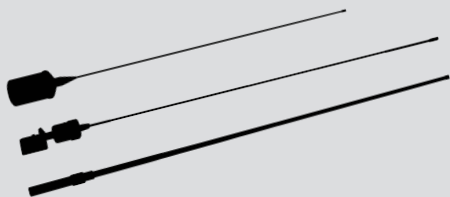
Internet Connectivity



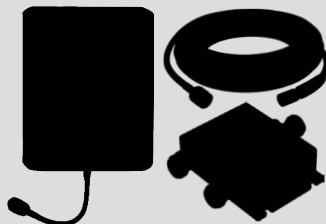
SiriusXM® Entertainment & Weather Antennas



Variety of Antennas
VHF, AIS, SSB, CB, AM/FM & More



Cellular Booster Accessories



Mounts, Replacement Tips, & More





Shakespeare is a global antenna brand with a reputation for superior quality, performance and durability. With manufacturing and distribution centers in Asia, North America and Europe, we are positioned to deliver excellent service to our customers worldwide. We have a rich tradition serving both military and civilian customers globally, and we offer our customers high quality products that have been perfected through a strong collaboration with professionals, navies and coast guards since 1952.



Shakespeare

U.S. Commercial Operations:

6111 Shakespeare Rd.
Columbia, SC 29223
Phone: 803-227-1590

U.K. Commercial Operations:

Enterprise Way, Fleetwood
Lancashire, FY7 8RY England
Phone: +44 (0) 1253 858787

Military Operations:

6111 Shakespeare Rd.
Columbia, SC 29223
Phone: 800-845-7750 x1310

Contact Us:

www.Shakespeare-ce.com/marine/customer-service