



"C15"



C15-H



C15-DW



C15-DB



Fits large sized 4:3 screen plotters or a combination of small - medium widescreen chart plotters and three standard sized instruments

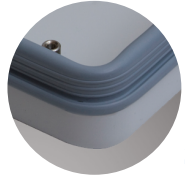
Features:

Innovative design allowing all helm Pods to be mounted to either 9.5" or 12" binnacle rails - *C15-H*, or directly to a flat surface - "deck mount", by way of a 290° swivel base that is available in white - *C15-DW*, or black - *C15-DB finishes*.

1. High quality stainless steel brackets - for watertight installation, supplied with tamper proof bolts and three internal rubber bushes to allow fitting to common rail sizes
2. Custom designed seal and fasteners, increases strength and prevents overtightening of the two halves of the Pod
3. Incorporated Goretex® vent to prevent build up of water vapour within the Pod
4. The deck base has internal built in brass spacers to prevent over compression of the plastic and aid security
5. Small internal and external indentations aid with installation and face cutting



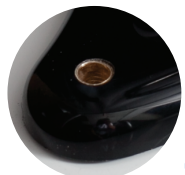
1.



2.



3.



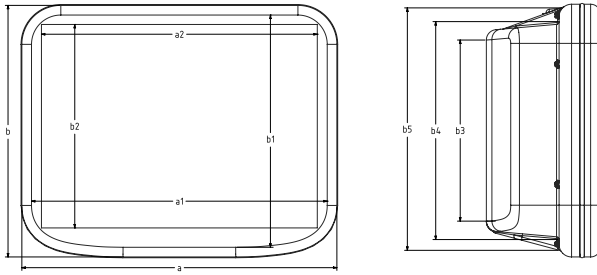
4.



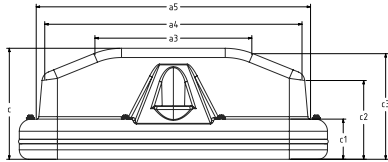
5.

FEATURES

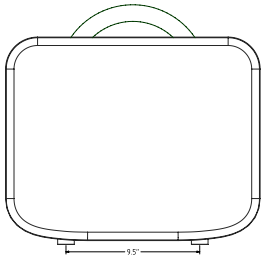
Pod Dimensions



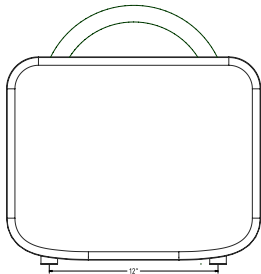
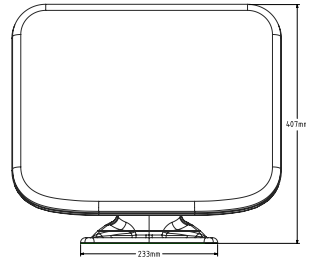
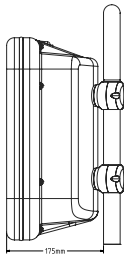
Pod Face Dimensions									
External Dimensions			Max Useable Face			Max Cut Out Area			
a	b	c	a1	b1	a2	b2			
456	364	165	428	336	400	295			
Pod Back Dimensions									
Width			Height			Depth			
a3	a4	a5	b3	b4	b5	c1	c2	c3	
232	381	406	260	314	350	60	116	156	



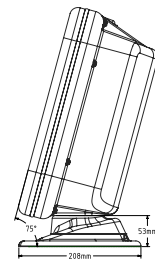
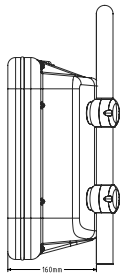
As Installed Pod Dimensions



9.5" Binnacle Rail



12" Binnacle Rail



Deck Mount

Pod Plotter Compatibility

Brand	Model Number
Furuno	MU150HD FCV1150 MFD12 DCU12 CH-250/270/300 FR8062/FR8122/FR8252
Garmin	GPSMAP4012/6012 GPSMAP5015/7015 GPSMAP8015
Geonav and Epak	GIS10/GIS12 G10/G12
JRC	JFE-680
KODEN	CVG200 CVS841 CVS1410/1410hs ESR140MK2 ESR160180
Raymarine	C/E120 widescreen C/E140 widescreen G150
SEIWA	Seawave
Simrad	MO15 NSO D/15 NX45
Standard Horizon	CPV550 CP590
The MarinePod C15 is compatible with W9 compatible widescreen plotters and three standard marine instruments - up to an individual size of 110mm x 110mm	

MarinePod®

MarinePod specialises in the design and manufacture of protective housings for marine electronics - “Pods”. It offers the marine industry a unique approach to the common problems faced when trying to install the latest navigation or instrumentation displays on to a vessel.

Custom Design

In addition to the standard range of Pods, MarinePod can manufacture Pods with custom finishes. Choose a finish that fully complements your vessel and style. Available at an additional cost. Please call for further information.



NOTE: If your brand and model of electronics is not listed please call prior to ordering, or visit www.marinepod.co.uk for further information. MarinePod operates a continuous product development program and reserves the right to alter specifications without prior notice.



Made in the UK



is a registered trademark of



Contact us for further information:

Tel: +44 (0) 1494 532 335

Fax: +44 (0) 1494 532 355

Email: sales@marinepod.co.uk

Web: www.marinepod.co.uk