

 **EXPOSURE
LIGHTS**



Photo Credit - Martin Keruzoré Volvo Ocean Race

2018 MARINE LIGHTS

Charles Caudrelier, Skipper Dongfeng Race Team

“The Exposure Lights give us totally reliable, lightweight, high power spot lights, or soft red light to avoid losing night vision for hours on end. They save us carrying multiple types of lights for different purposes and they are so lightweight, which is race critical for us.”



Photo Credit - Martin Keruzoré Volvo Ocean Race



Designed for high performance, Exposure Lights combines the latest advantages of LED technology with powerful Lithium Ion rechargeable batteries, creating very lightweight, highly compact torches with unrivalled power, functionality and versatility for their size. This includes the ability to combine high power search light options (visible up to 3 nautical miles), with red beam, and a variety of safety features in a very small, lightweight, buoyant casing.

Exposure Lights are the Technical Lighting supplier to Dongfeng Race Team and Turn the Tide on Plastic in the Volvo Ocean Race 2017/18. They were the Official Supplier to Abu Dhabi Ocean Racing, overall winners of the Volvo Ocean Race 2014/15, and work with a variety of sailors and teams including Alex Thomson Racing.

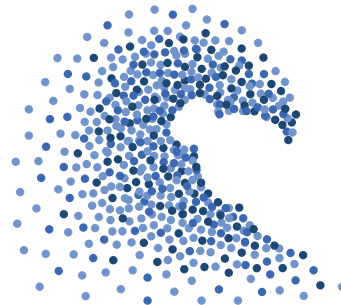
Exposure Lights, are also renown in the cycle market as the leading global brand of premium performance bike lights. UK based in West Sussex, the products are designed, developed and constructed in Britain. Specifically, for the marine market, Exposure use marine grade anodising on lightweight aluminium casing to ensure durability against the elements whilst maintaining high strength. Combined with functional brackets and accessories the Exposure marine range is a new generation of multi-utility rechargeable torches, making life afloat safer, easier and brighter.

Technical suppliers to:



**DONGFENG
RACE TEAM**

IN THE VOLVO OCEAN RACE



**clean
seas**

turn the tide
on plastic

Photo Credit - Jeremie Lecaudey Volvo Ocean Race



ENVIRONMENT

Non-rechargeable batteries require up to 500% more electricity to produce than they can release, the CO2 emissions saved through using rechargeable batteries are huge

RUNNING COST

You can save up to 98% on running costs using rechargeable batteries, when comparing the cost of charging a battery with purchasing a new set

PRODUCT CATEGORIES



WORK LIGHT

20 - 30-degree beam angle to illuminate wide areas



SEARCH LIGHT

15 - 20-degree beam angle to illuminate large areas whilst searching



SPOT LIGHT

Concentrated beam angle less than 9° for maximum beam distance



(Optimised Night Vision) Red and White

Instant access to red light to preserve night vision



STROBE

High power strobe visible for over 3 nautical miles at night



E-FLARE

High power red strobe light, designed to simulate a distress flare

PRODUCT USE



HEAD TORCH

Designed to fit comfortably with minimal weight on the forehead



POCKET TORCH

Designed to fit in a pocket, weighing less than 50 grams



HAND TORCH

Designed to fit in the palm of your hand, weighing between 50-250 grams



MOB TECH

Patent pending water activated strobe technology - designed to prevent false activation



OLAS

Bluetooth compatibility with OLAS mobile application



FLOAT

Precision engineering to ensure the light floats beam upright



FUEL GAUGE

Traffic light battery level feedback (Green, Orange, Red, Red Flashing)



USB

Universal charging capability via USB ports



Photo Credit - Jeremie Lecaudey Volvo Ocean Race



SPOT ME

SRP £49.95

A compact waterproof strobe for sailors, paddlers, surfer and outdoor adventures. The unique 'click' single hand operation ensures simple operation when in distress.



OUTPUT	WEIGHT	BURNTIME	DEPTH RATING
250 Lumens White	35 g	5 hrs	1 metre

SPOT ME-R

SRP £49.95

A compact waterproof red strobe for sailors, paddlers, surfer and outdoor adventures. The unique 'click' single hand operation ensures simple operation when in distress.



OUTPUT	WEIGHT	BURNTIME	DEPTH RATING
120 Lumens Red	36 g	5 hrs	1 metre

Photo Credit - Martin Keruzoré Volvo Ocean Race



RAW PRO

SRP £119.95

A compact, lightweight headtorch with single click access to red or white outputs
 'This really is the perfect headtorch for sailors' Bruce Jacobs – 5 stars, Yachting World.



OUTPUT	WEIGHT	BURNTIME	DEPTH RATING
200 Lumens White 100 Lumens Red	43 g	1 - 25 hrs	5 metres

RAW XS

SRP £109.95

A compact, lightweight pocket torch with single click access to red or white outputs.
 Compatible with Exposure helmet brackets for side mounting (available separately).



OUTPUT	WEIGHT	BURNTIME	DEPTH RATING
200 Lumens White 100 Lumens Red	45 g	1 - 25 hrs	5 metres



ACTION 9 SEARCH

SRP £229.95

Designed for maximum spotting ability to aid in search and rescue or to act as a vessels portable spot light.

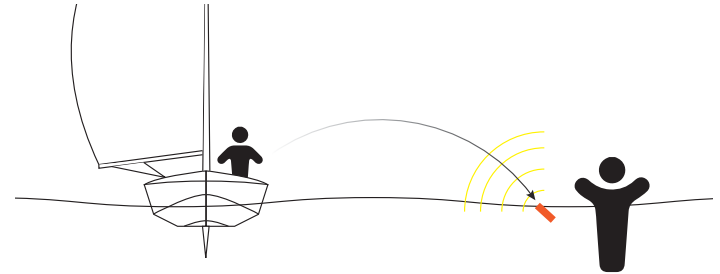
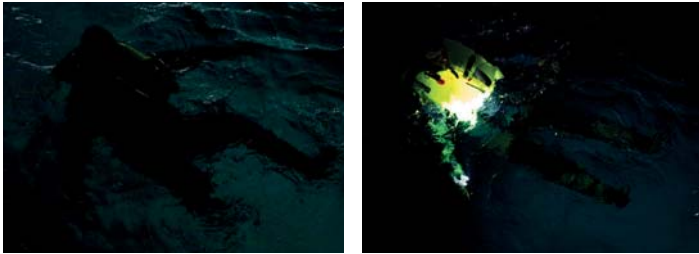


OUTPUT	WEIGHT	BURNTIME	DEPTH RATING
1000 Lumens White	263 g	4 - 16 hrs	100 metres



Photo Credit - Jeremie Lecaudey Volvo Ocean Race

FLOATING LIGHTS



MOB CARBON

SRP £124.95

A waterproof, floating search light with integrated water activated strobe (MOB Tech). Carbon and aluminum construction for maximum strength but minimum weight.



OUTPUT	WEIGHT	BURNTIME	DEPTH RATING
1000 Lumens White	95 g	1.5 - 6 hrs	5 metres



FLOAT-ON

SRP £74.95

A waterproof, floating pocket torch with integrated water activated strobe (MOB Tech). A multi-functional safety aid for both novice and experienced boaters.



OUTPUT	WEIGHT	BURNTIME	DEPTH RATING
120 Lumens White	45 g	1 - 20 hrs	1 metres



PRODUCT	SPECIFICATION						TECHNOLOGY / FEATURE				
	Lumens	Run Time	Weight (g)	Size	Output colour	Depth rating	MOB Tech	OLAS	Float	Fuel Guage	USB
OLAS FLOAT-ON	120	1-20 hrs	45	83x34	White	1 m	✓	✓	✓	✓	✓
FLOAT-ON	120	1-20 hrs	45	83x34	White	1 m	✓		✓	✓	✓
F-LIGHT	1000	1.5-6 hrs	95	130x37mm	White	5 m	✓		✓	✓	✓
ACTION 9 SEARCH	1000	4-16 hrs	263	124x50mm	White	100 m				✓	✓
RAW-XS	200	1-25 hrs	45	70x30mm	White / Red	5 m				✓	✓
RAW-PRO	200	1-25 hrs	43	55x35mm	White / Red	5 m				✓	✓
SPOT-ME	250	5 hrs	35	50x24mm	White	1 m					
SPOT-ME R	120	5 hrs	36	50x24mm	Red	1 m					